

# **LONG TERM FORECASTS OF WATER USAGE FOR ELECTRICITY GENERATION: SOUTH AFRICA 2030**

Report to the  
**WATER RESEARCH COMMISSION**

by

**ANASTASSIOS POURIS<sup>1</sup>, GEORGE ALEX THOPIL<sup>2</sup>**

<sup>1</sup>Institute for Technological Innovation, University of Pretoria

<sup>2</sup>Department of Engineering and Technology Management, University of Pretoria

**Report No. 2383/1/14**

**ISBN 978-1-4312-0646-9**

**March 2015**

**Obtainable from**

Water Research Commission  
Private Bag X03  
GEZINA, 0031

**DISCLAIMER**

This report has been reviewed by the Water Research Commission (WRC) and approved for publication. Approval does not signify that the contents necessarily reflect the views and policies of the WRC, nor does mention of trade names or commercial products constitute endorsement or recommendation for use.

## Executive Summary

---

### Background:

South Africa's energy sector, particularly the electricity sector, is currently in a state of flux as a result of social, economic and environmental pressures. The need for more energy while sustaining the society, economy and environment simultaneously calls for an unprecedented call for efficient management of resources. Water being one of the basic yet constrained resources is a vital component in electricity generation. The nexus between water and energy is a topic that will require increased and improved focus because of a variety of factors such as increasing energy needs, increasing populations, rural-urban dynamics and changing rainfall patterns. South Africa's electricity generation industry is dominated by coal based electricity generation. This technology accounts for approximately 90% of the electricity generated by Eskom. South Africa is expected to have a deficit of 234 giga litres by 2025, (based on conservative estimates) as projected within national accounts published by Statistics, South Africa.

South African water resources are divided into 19 water management areas out of which 6 face moderate shortage while 9 encounter severe shortages. Though South Africa's electricity generation activities and large industries only account for 6% to 8% of total water resources, these activities are located mostly within moderately and severely constrained water management areas. Therefore water resource management and allocation are necessary to avoid severe water scarcity in water intensive sectors and areas.

At present Eskom's coal based power plant fleet consists of 10 base load power plants (used during normal demand) and 3 return to service (RTS) power plants (used during peak demand). These power plants have diverse technical parameters and use a combination of cooling technologies which is bound to provide different water usage profiles. Within the context of the current Integrated Resources Plan, South Africa's energy mix is bound to change in order to provide sufficient energy security. However the abundance of local reserves of coal is likely to keep coal a dominant fuel source.

### Aims:

The study aimed to:

- Forecast water usage patterns associated with coal based electricity generation. Forecasting of water consumption factors (in l/kWh) and total water consumption (in megalitres) is done.
- Assess scenarios of water usage patterns based on cooling technology and power plant type. Assessment of water usage patterns for wet cooled and dry cooled power plants. Assessment is also performed based on load type for base load and non-base load power plants.
- Propose projected water saving measures within distressed water management areas.

### Methodology:

The methodology used in the study relies on work done by the National Energy Technology Laboratory, USA, as a guideline. The guideline study estimates water usage based on water withdrawal and consumption factors. The mathematical technique used to forecast total water consumption and water consumption factors is based on a long-term moving average approach. This approach relies on historical data of water consumption factors and generation output. The methodology also takes into consideration the percentage change in system thermal efficiency which is a variable that has an influence on the water consumption factor of a power plant. Historical data of South African power plants was supplied by Eskom from archival records.

## **Results and conclusions:**

The investigation derived the following findings:

- Water consumption factor forecasts of dry cooled power plants (ranging from 0.1 l/kWh to 0.15 l/kWh) are expected to be one order of a magnitude lower than wet cooled power plants (ranging from 2.2 l/kWh to 2.4 l/kWh).
- Water consumption factor for the RTS fleet is expected to reach 3 l/kWh by the year 2020.
- Water requirements are expected to increase from roughly 360 giga litres on current levels to just above 370 giga litres in 2021.
- Depending on the retirement of the RTS fleet, total water requirements could be reduced (by 12% to 15%) to 320 giga litres.
- RTS power plants are located within water constrained water management areas Olifants and Inkomati.
- Based on the projection the total base load water consumption will increase from 332 giga litres in 2013 to roughly 370.5 giga litres during 2035.

The above findings are based on the forecasted electricity output from the coal power plant fleet could reach 260 TWh by the year 2035. These forecasts are based on an expected installed capacity of 36900 MW being operated at a capacity factor of 80%.

The results show that management of water resources in the electricity generation sector can result in informed water allocations within water management areas. Proposed gradual retirement of the RTS fleet could result in a savings of 15% of the forecasted shortfall of 234 giga litres by the year 2025. The deficit in electricity generation output caused by the retirement of the RTS fleet will have to be compensated by the simultaneous commissioning and operation of new build power plants.

## **Recommendations:**

Recommendations are listed as two separate groups, one for future research and one for future planning and decision-making.

Based on the work completed, a number of areas for future research and investigation can be listed:

- Credible and verifiable assessment of water usage patterns for new coal technologies.
- Mapping of water usage of coal power plants with water inventories in water deficient WMAs.
- Impact of emission mitigating technologies on water usage.
- Estimation of water usage patterns in renewable energy technologies.

These results from these investigations are bound to add to the body of knowledge and decision-making in the field of water resource management and energy-water nexus.

Based on the results of the study a number of observations can be made for water resource planning and decision-making:

- Eskom's RTS power plants namely Camden, Komati and Grootvlei which are water intensive are located in the severely constrained WMAs namely, Olifants and Inkomati. While they satisfy energy requirements they adversely affect water needs.
- The savings of roughly 35 giga litres associated with the decommissioning of the RTS fleet and operation of the new build power plants Medupi and Kusile, could account for almost 15% of the forecasted deficit of 234 giga litres by 2025.

- While Medupi is located in the moderately constrained WMA of Limpopo, Kusile is located in the severely constrained Olifants WMA. Therefore Kusile will have a larger water saving impact within the respective WMA.
- The role of coal in electricity generation will be a dominant factor up until locally available resources start to diminish. However, technologies that utilise water efficiently will have to play a more dominant role in order to preserve national water security.

## Acknowledgements

---

The project team wishes to thank the following people for their contributions to the project.

<b>Reference Group</b>	<b>Affiliation</b>
Dr Jo Burgess	Water Research Commission
Dr Sibbele Hietkamp	SANEDI
Prof John Ouma Mugabe	University of Pretoria
Dr Roula Inglezi-Lotz	University of Pretoria
Ms Mpetjane Kgole	Eskom
Prof Bok Marais	University of Pretoria

### **Others**

Eskom This study would not have been possible without ESKOM's support through the provision of relevant data.

# Contents

---

Executive Summary .....	ii
Acknowledgements .....	iv
Contents .....	v
List of Tables .....	vi
List of Figures .....	vi
List of acronyms and units .....	vii
Glossary .....	viii
 <b>Chapter 1: Introduction .....</b>	 <b>1</b>
1.1 Background .....	1
1.2 Water usage in South Africa .....	2
1.3 Project aims .....	4
 <b>Chapter 2: Literature review .....</b>	 <b>5</b>
2.1 Water usage technologies .....	5
2.1.1 Once-Through (Open-Loop) Cooling .....	5
2.1.2 Closed-Loop (Wet) Cooling .....	6
2.1.3 Dry (Air) Cooling .....	6
2.1.4 Hybrid Cooling .....	8
2.2 Water consumption in power plant cooling systems .....	8
2.3 Water demand forecasting .....	12
2.4 Coal based electricity production in South Africa .....	13
 <b>Chapter 3: Methodology .....</b>	 <b>16</b>
3.1 Assumption list .....	16
3.2 Mathematical model .....	18
 <b>Chapter 4: Results .....</b>	 <b>21</b>
4.1 Base load analysis .....	21
4.1.1 Wet cooled base load analysis .....	23
4.1.2 Dry cooled base load analysis .....	24
4.2 Return to Service analysis .....	25
4.3 New build analysis .....	26
4.4 Combined cases .....	27
4.5 Findings .....	28
 <b>Chapter 5: Conclusions and Recommendations .....</b>	 <b>31</b>
5.1 Conclusions .....	31
5.1 Recommendations for future work .....	31
5.2 Recommendations for planning .....	32
 <b>References .....</b>	 <b>34</b>

## List of Tables

---

Table 1: Technology innovations to reduce water usage.....	9
Table 2: Power plant cooling technologies used in the USA .....	10
Table 3: Cooling technologies in Eskom coal power stations (current and future) .....	13
Table 4: Assumption differentiation between current study and BCS5 scenario .....	16
Table 5: Indicative water consumption factor for new coal technologies .....	32

## List of Figures

---

Figure 1: South Africa water management area gaps .....	2
Figure 2: Water withdrawal in South Africa (2011 billion cubic meters) .....	3
Figure 3: Open loop cooling system .....	6
Figure 4: Wet-recirculating closed loop cooling system.....	7
Figure 5: Dry cooling system .....	7
Figure 6: Hybrid cooling system .....	8
Figure 7: Operational water consumption factors for electricity generating technologies.....	11
Figure 8: Eskom power plants .....	14
Figure 9: Base load power plant water consumption factor projection .....	21
Figure 10: Base load power plant generation output projection.....	22
Figure 11: Base load total power plant total water consumption projection.....	22
Figure 12: Wet cooled base load water consumption factor projection .....	23
Figure 13: Wet cooled power plant total water consumption projection .....	23
Figure 14: Dry cooled base load water consumption factor projection.....	24
Figure 15: Dry cooled power plant total water consumption projection .....	24
Figure 16: RTS power plant water consumption factor projection.....	25
Figure 17: RTS total power plant total water consumption projection .....	25
Figure 18: New build power plant water consumption factor projection .....	26
Figure 19: New build power plant total water consumption projection .....	27
Figure 20: Combined water consumption factor projection.....	27
Figure 21: Combined coal power plant water consumption projection .....	28
Figure 22: Coal fleet average consumption forecast (weighted vs average) .....	29
Figure 23: Electricity output per technology fleet forecast .....	29
Figure 24: Combined coal fleet generation forecast.....	30



## List of acronyms and units

---

CSP	Concentrating solar power
DoE	Department of Energy
EIA	Energy Information Administration
EPRI	Electric Power Research Institute
FBC	Fluidised Bed Combustion
FGD	Flue gas desulfurization
GDP	Gross Domestic Product
Gigalitre	1000000 m <sup>3</sup>
GWh	Gigawatt-hour
kWh	kilowatt-hour
Megalitre	1000 m <sup>3</sup>
Mm / yr	millimetre per year
Mm / annum	millimetre per annum
NETL	National Energy Technology Laboratory
PF	Pulverised Fuel
RTS	Return to service
TWh	Terawatt-hour
UGC	Underground Coal Gasification
USGS	United States Geological Survey
WMA	Water management area

## Glossary

---

Base load	Power plants that provide base load electricity demand are called base load plants.
Capacity factor	Indicates how much electricity a power plant produces relative to the maximum it could produce at continuous full power operation during a period and is expressed in percentage terms.
Generation output	Is the amount of electricity generated based on the nominal capacity usually calculated on an annual basis and expressed in MWh.
Installed capacity	Also known as rated capacity is the capacity that a power plant is designed to deliver and is expressed in MW.
New build	Power plants that are currently under construction and are expected to deliver base load electricity demand upon completion. These power plants are called “new build” to distinguish from existing base load power plants.
Nominal capacity	Also known as plant capacity is the capacity that a power plant can deliver in reality because of constraints such as aging and technical deteriorations and is expressed in MW.
Return to service	Power plants that were decommissioned but had to be brought back to service because of increasing electricity demand.

# Chapter 1: Introduction

---

## 1.1 Background

Scarcity of water is a broad issue that is a concern for national governments and policy making bodies the world over. More than 1 billion people currently lack access to safe drinking water, and 2.4 billion people lack access to improved sanitation (The Atlantic Council, 2005). It is estimated that by 2025, more than 60% of the world's population will live in countries with significant imbalances between water requirements and supplies, largely in Asia, Africa, and Latin America (Feeley et al., 2008).

South Africa is located in a semi-arid region and considered among one of the 30 driest countries in the world. South Africa could face a situation of extensive water scarcity unless current reserves and usage patterns are managed properly (De Wet, 2010). These assessments are given further weight when considering the fact that South Africa's mean annual precipitation is 497 mm/yr, which is well below the global average of 860 mm/annum (Turton, 2008). Putting things further into perspective, Botswana and Namibia have an annual rainfall of 400 mm/yr and 254 mm/yr respectively, but have populations of only 2,00 and 2,28 million, while South Africa has a population of 50 million people (World Bank, 2010). To add to this, South Africa's relatively low rainfall rate and large population size place a skewed level of stress on the limited water resources. South Africa has no extensive or navigable rivers, with the Zambezi River being the closest fitting these characteristics. The rivers in South Africa, namely the Limpopo, Inkomati, Pongola and Orange, have a combined annual flow of 49 000 cubic metres per year ( $\text{m}^3/\text{a}$ ), which is less than half of the Zambezi's, which highlights South Africa's limited water availability when compared to neighbouring regions (NWRS, 2004). The hard rock nature of the country's geology allows only about 20% of the groundwater resources' major aquifer systems to be available for utilisation on a large scale.

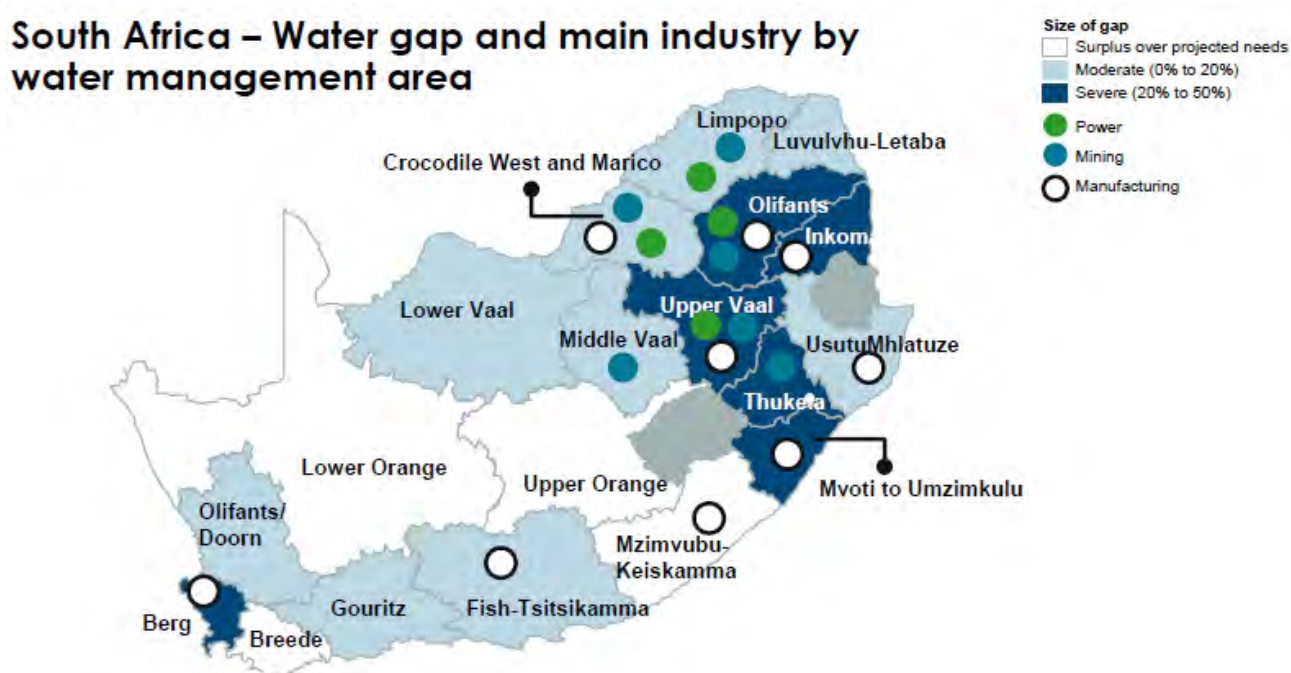
As a result of the presence of minerals and resources in areas devoid of major water sources, urban populations in regions (such as Gauteng and Mpumalanga Highveld) have increased and led to a skewed supply-demand scenario.

To facilitate water management the country has been divided into 19 catchment-based water management areas (WMA). The inter-linking of these areas plays a major role in catering to country's needs and preventing disparity of water supply. Of the 19 WMAs, water requirements exceeded availability in 15 catchment areas (NWRS, 2004). The province of Gauteng in particular is expected to suffer shortages in the future. However, cooperation with the Lesotho government through the Lesotho Highlands Project is expected to ease shortages in the Province (South African Water Research Commission, 2009).

The South African situation is not unique in the world. A similar situation of natural misallocation of water resources has also been observed in China, with the north of the country facing severe shortages compared to the south. China's economy is similar to South Africa's from the perspective of the agricultural sector's water usage to GDP contribution. China's agricultural sector uses 65% of water resources, while contributing to less than 15% of the GDP (Wong, 2009). South Africa, similarly, utilises 66% of the water resources to generate 3% of the GDP (DWA, 2013). While restructuring of the economy may alleviate some of the water challenges another possible major cause of scarcity of water may be related to climate change. From a sub-Saharan and South African perspective, the projections portray a negative picture, with rainfall expected to decrease by 50% (De Wit and Stankiewicz, 2006).

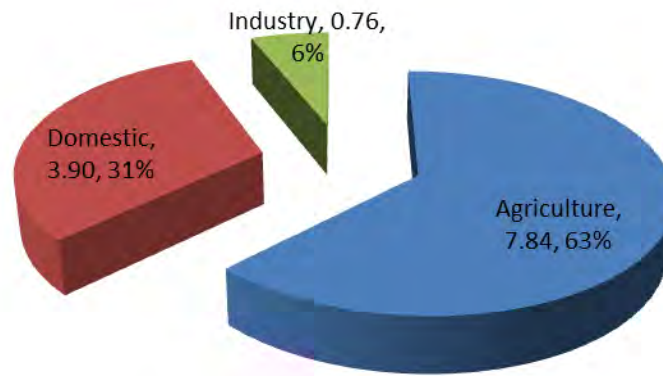
## 1.2 Water usage in South Africa

The majority of water resources (62%) in South Africa is used for agriculture and irrigation. Rural and urban use accounts for 18% and usage by large industries and power generation accounts for 8% (CSIR, 2010). Similar patterns can be observed in the sectoral water usage breakdown provided in the second National Water Resource Strategy (DWA, 2013). Of the 19 WMAs, 9 encounter moderate shortages whereas 6 WMAs face severe shortage (as shown in Figure 1). Though water usage in power generation and large industries is approximately only 8%, the regions where these industries are located in moderately to severely water constrained WMAs (Mckinsey & Company, 2009). The national accounts database related to WMAs published by Statistics South Africa, anticipate a base case water deficit of 234 gigalitres by the year 2025 (Stats SA, 2010). Therefore, informed water usage within the power generation sector could ease the water burden in the severely and moderately constrained WMAs.



**Figure 1: South Africa water management area gaps Source: (Mckinsey & Company, 2009)**

The World Bank databank provides data for South African sectoral water withdrawal for the year 2011 (shown in Figure 2). The focus of this study is to analyse the usage of water for electric power generation. The field of integrated water-energy studies was established in 1994 by Peter Gleick with his Annual Review of Energy and the Environment article. Gleick (1994) employed a life cycle analysis of water and energy resources to explain and quantify the water intensity of energy resource development from extraction through power generation, as well as the energy intensity of the water sector from extraction through conveyance, treatment, distribution and end use. Despite the importance of the field for policy and planning “the depth of Gleick’s call for regulatory and operational innovation, and for more interdisciplinary research to capture the full benefits of integrated water-energy resource management, largely remains unmet” (Water in the West, 2013; p1).



**Figure 2: Water withdrawal in South Africa (2011 billion cubic metres) (Source: World Bank, 2014)**

Water for electricity is of particular importance as thermoelectric power plants are among the most voracious users of water. In the United States the Geological Survey estimated that in 2005 the thermoelectric power plants were responsible for nearly 52% of surface freshwater withdrawals and 43% of total water withdrawals (Kenny et al., 2009). Power plants only consume 7% in once-through cooling technology while consuming 70% in closed loop (wet) cooling respectively (and returning the rest to the environment). 43% of the generating capacity is associated with once-through cooling while 42% uses wet closed loop cooling (Feeley et al., 2008). To put it into perspective thermoelectric withdrawals were 200 billion gallons<sup>1</sup> a day or 670 gallons per U.S. inhabitant (Water in the West, 2013).

According to Kenny et al. (2009, p47) of the U.S. Geological Survey “withdrawal” is defined as the amount of water removed from the ground or diverted from a water source for use, while “consumption” refers to the amount of water that is evaporated, transpired, incorporated into products or crops or otherwise removed from the immediate water environment.

In other words water withdrawn is distinguished from water consumption under the logic that water that is withdrawn from a source can be returned to that source. However, if the water withdrawn from a source is not returned to the source, the water usage is categorised as consumption. Different sectors have dissimilar water withdrawal and consumption rates. The technologies used in different sectors also affect the withdrawal and consumption rates. The focus in this investigation is water usage patterns of the multiple power coal (thermal) power plants in South Africa. Depending on the cooling technologies in use, power plants tend to have different water withdrawal and consumption rates

The following chapter constitutes the literature review which describes certain key technologies in the field of energy- water nexus, provides a review of relevant literature and refers to efforts to forecast water demand for electricity generation. Chapter 3 outlines the methodology followed in this effort and Chapter 4 provides the results of the investigation. The final chapter provides conclusions and recommendations for further research.

---

<sup>1</sup> Please note billion in this report refers to short billion. 1 US gallon = 3.785 litres

### **1.3 Project aims**

The following were the aims of the project:

1. To forecast water usage patterns associated with coal based electricity generation.  
Forecasting of water consumption factors (in l/kWh) and total water consumption (in megalitres) is performed.
2. To assess scenarios of water usage patterns based on cooling technology and power plant type.  
Assessment of water usage patterns for wet cooled and dry cooled power plants.  
Assessment is also performed based on load type for base load and non-base load power plants
3. To propose projected water savings measures within distressed water management areas.

## Chapter 2: Literature review

---

Over the past few decades the evolution of technologies has resulted in countries employing a combination of mechanisms to operate thermal power plants (Barroso et al., 2010). The first part of this chapter will introduce a number of cooling technologies that are used internationally. The second section provides a discussion of the consumption of water occurring within diverse electricity generation technologies. The combination of cooling technology and fuel technology tends to alter the water demand in electricity generation drastically. Therefore water demand forecasting is essential in determining the contribution of electricity generation within the overall water usage profile of a country or region. Having discussed the relevant topics in chronological order the South African electricity generation profile and thermal power plant cooling technologies are introduced and discussed.

### 2.1 Water usage technologies

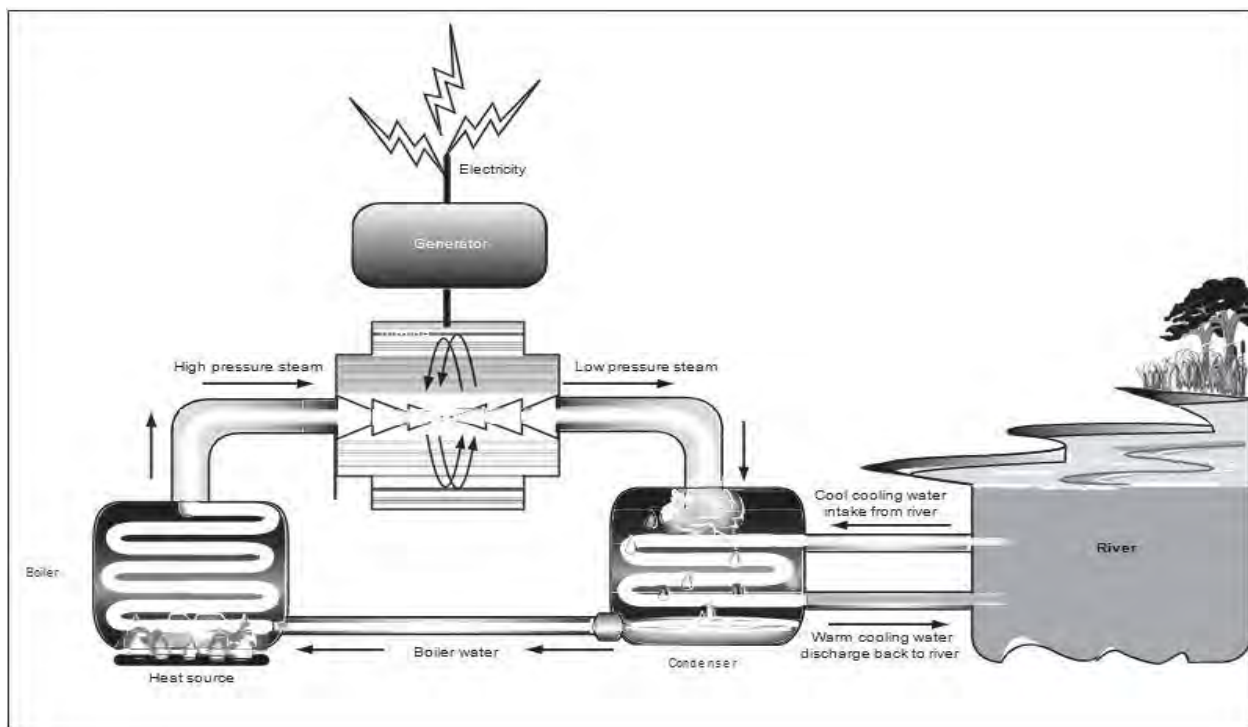
This section elaborates on the concepts often referred in investigating water use at power plants. The concepts of water withdrawal, water consumption and the various types of cooling systems are part of these issues. It should be emphasised that water is also used for non-cooling plant processes such as for operation of flue gas desulfurization (FGD) devices, ash handling, wastewater treatment, and wash water. However, cooling water usage is by at least one order of magnitude larger than the other uses (Rutberg, 2012).

Water use for cooling of thermoelectric power plants is affecting the overall water supply and the ecological health of surface water bodies (Rutberg, 2012). In a number of occasions permits for proposed plants have been denied because of water availability concerns and potentially adverse effects on aquatic life in various locations internationally (Anderson, 2006). Similarly during droughts there have been occasions that generation plants have been shut down because if operated they would not be compliant with water use regulations (Martin, 2012). Hence, water use for electricity generation affects regional ecology and security of supply of both water and electricity.

There are different technologies used for cooling which possesses advantages and disadvantages. The most used technologies are: once-through (open-loop) cooling, closed-loop (wet) cooling, dry (air) cooling and hybrid cooling (GAO, 2009).

#### 2.1.1 Once-Through (Open-Loop) Cooling

Once-through cooling uses an ample supply of water (from an ocean, river, lake, cooling pond or canal) to run through the system's heat exchanger to condense the low-pressure steam at the exhaust of the turbines (Figure 3). Although these plants do not consume much water (i.e., they return about 99% of the water to the source), the availability of water is critical to plant operation because of the substantial demand (Water in the West, 2013). This makes these plants vulnerable to droughts, high-temperature events and competition for water resources. Moreover, the large intake of water is extremely disruptive for aquatic life, and the discharge temperatures alter aquatic ecosystems considerably. The intake structures may kill fish and other aquatic organisms and the discharge of heated water can be particularly lethal to native aquatic species (Sierra Club, 2011).



**Figure 3: Open loop cooling system (Source: GAO, 2009)**

### 2.1.2 Closed-Loop (Wet) Cooling

While once-through cooling relies on the high thermal capacity of water, closed-loop cooling relies on the high-energy requirements of water evaporation (Water in the West, 2013). Cooling water circulates between the condenser and a cooling tower (Figure 4). These cooling systems have much lower water requirements but consume much more of the withdrawn water. The water source can be from the ocean, a lake, a river, a cooling pond or a canal. Due to stringent regulations concerning open-loop cooling, closed-loop cooling has become the technology used since the 1970s (U.S. DOE, 2008).

### 2.1.3 Dry (Air) Cooling

Dry cooling systems are very similar to closed-loop systems, but air replaces water to cool the circulating cooling fluid, thus eliminating water withdrawal and consumption (Figure 5). However, this greatly impacts plant efficiency due to a lower thermodynamic theoretical maximum (Carnot cycle) and high electricity use for powering the massive fans used in cooling (Water in the West, 2013). Dry cooling is heavily impacted by ambient temperatures and humidity and will perform less well than wet cooling, particularly in hot and dry climates where the use of such technologies is most desirable. The average loss of output is about 2% annually (Mielke et al., 2010), but can be as high as 25% at the peak of summer when demand is at its highest (U.S. DOE, 2006). Moreover, the capital cost of such a system is about 10 times more than that of an open-loop system (about \$180/kW, EPRI, 2007), which makes it very unattractive to utilities without massive subsidies and grants. Dry cooling systems are more expensive than conventional wet cooling techniques when considering the infrastructural investments required (EPRI, 2008).



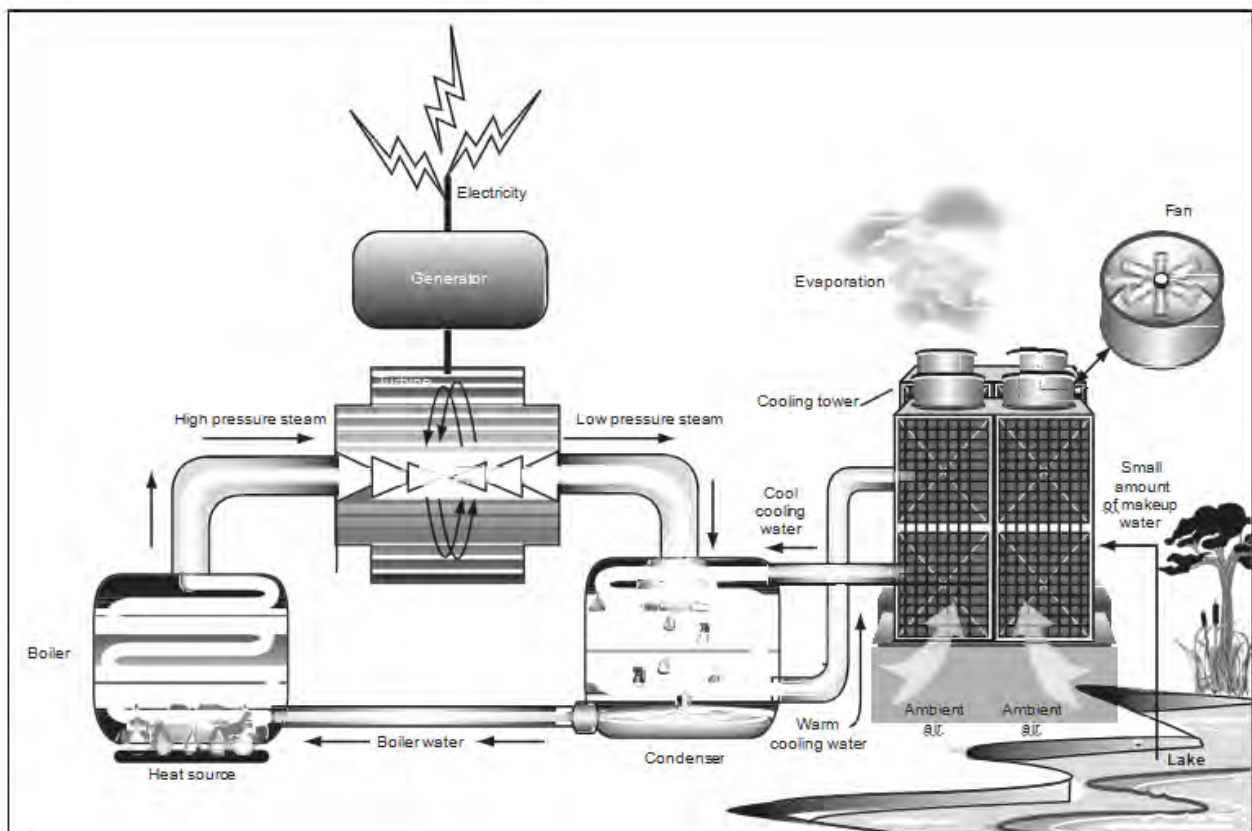


Figure 4: Wet-recirculating closed loop cooling system (Source: GAO, 2009)

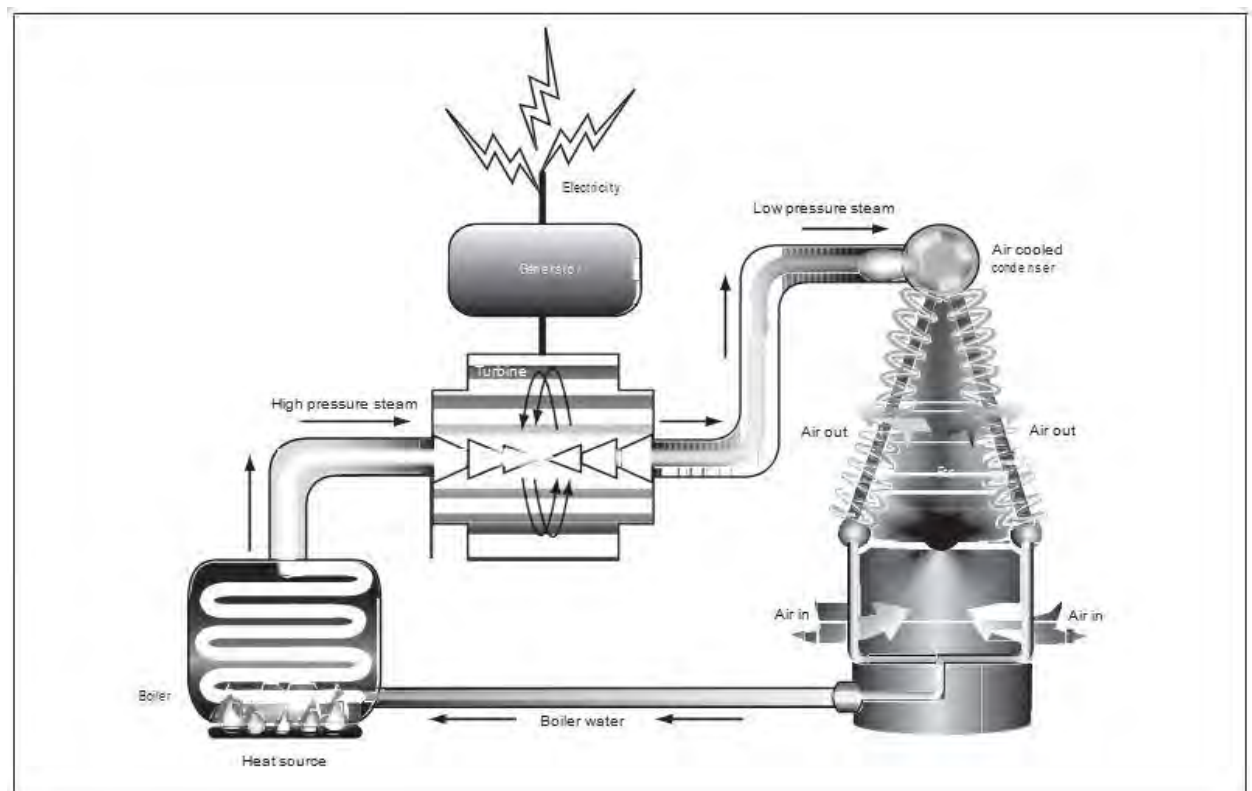


Figure 5: Dry cooling system (Source: GAO, 2009)

### 2.1.4 Hybrid Cooling

Hybrid cooling technology uses a combination of wet and dry cooling systems, where wet and dry cooling components can be used either separately or simultaneously (Figure 6). This way, the system can operate both the wet and dry components together or rely only on dry cooling to avoid water use, economically reducing water requirements of the wet systems by up to 80%. Hybrid cooling uses bundles of cooling elements arranged in concentric rings inside the cooling tower. Heat is conducted from the warm water by these cooling elements, which have cool water flowing through them. Cooling water that flows through the elements is then cooled down by cold air passing over and then returned to the condenser. This system is referred to as a closed system since there is no loss of water due to evaporation. Dry cooling techniques differ in the respect that heat exchange occurs between hot steam leaving the turbine blades and a heat exchanger. Air passing through the exchanger is supplied by multiple electrical fans. The heat forms steam that is removed by the air within the exchanger thereby condensing the steam back into water. Capital costs usually fall midway between wet and dry cooling systems (EPRI, 2007).

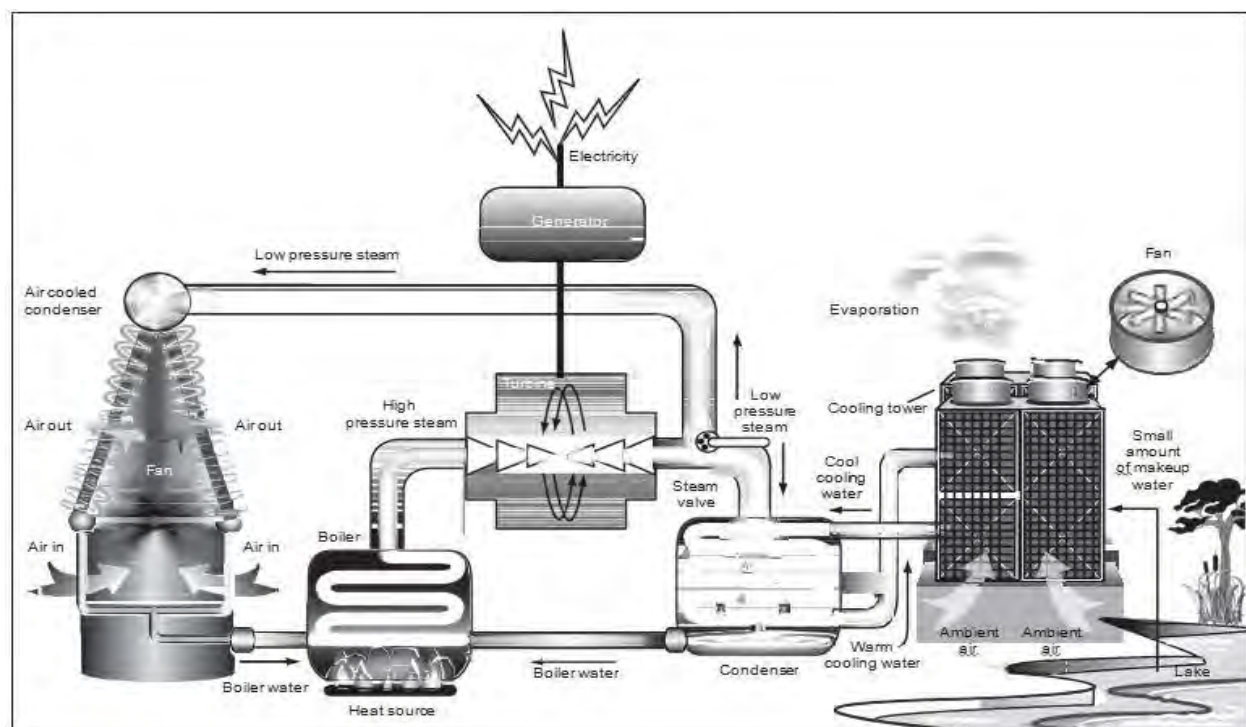


Figure 6: Hybrid cooling system (Source: GAO, 2009)

The adoption of various technologies determines the water consumption in the electricity generation mechanisms in a country.

## 2.2 Water consumption in power plant cooling systems

Water is a critical resource in the operations of all thermoelectric power generation. 'Thermoelectric power generation' is a broad category of power plants consisting of coal, nuclear, oil, natural gas, and the steam portion of gas-fired combined cycles. Thermoelectric generation represents the largest segment of electricity production in a number of countries including South Africa (Feeley et al., 2008).

Water consumption is recognized internationally as an important factor driving decisions on where to build, retrofit or retire cooling stations and even entire power plants (Barker 2007; U.S.DOE 2006). However, limited studies investigating water cooling needs exist mainly because of the lack of detailed data. Field data are sparse and of poor quality internationally (Mittal et al., 2009). Mittal et al. (2009) identified

significant limitations in the USA data. They state “respondents may use different methods to measure or estimate data, and instructions may be limited or unclear. Respondents may make mistakes or have nontechnical staffs fill out surveys” (p, 69).

Rutberg (2012) while discussing the issue states that, “outside the US, available data is generally even sparser. One notable exception, however, is South Africa. Eskom the main public utility maintains detailed accounts of water use at each of their power plants.”

Research on the technical aspects of water use minimization is widespread. For example, the US Department of Energy’s (DOE) National Energy Technology Laboratory (NETL) is engaged in a research and development (R&D) program to reduce freshwater withdrawal and consumption from existing and future thermoelectric power generating facilities. The NETL program can be classified in five categories as described in Table 1.

**Table 1: Technology innovations to reduce water usage**  
Category Description (Adapted from Feeley et al., 2008)

<b>A)</b>	Provide alternate source of cooling water make-up Use of produced water in re-circulated cooling systems at power generation facilities and development of an impaired water cooling system Development and demonstration of a modelling framework for Assessing the Efficacy of using mine water for thermoelectric power generation Reuse of treated internal or external wastewaters in the cooling systems of coal-based thermoelectric power plants
<b>B)</b>	Increase cycles of concentration for wet re-circulating systems, thereby decreasing wet cooling tower blow-down requirements A synergistic combination of advanced separation and chemical scale inhibitor technologies for efficient use of impaired water as cooling water in coal-based power plants Application of pulsed electrical fields for advanced cooling in coal-fired power plants
<b>C)</b>	Advanced cooling technology Use of Air2Air™ technology to recover fresh-water from the normal evaporative cooling loss at coal-based thermoelectric power plants
<b>D)</b>	Reclaim water from combustion flue gas for use as cooling water make-up Water extraction from coal-fired power plant flue gas Recovery of water from boiler flue gas Reduction of water use in wet FGD system
<b>E)</b>	Reduce cooling tower evaporative losses via coal drying Use of coal drying to reduce water consumed in pulverized coal power plants

Macknick et al. (2011) investigated the water requirements for a number of energy technologies. The technologies addressed consist of configurations of concentrating solar power (CSP), solar photovoltaic (PV), wind, bio-power, geothermal, hydroelectric, nuclear, natural gas and coal technologies. Cooling system technologies considered include wet re-circulating technologies (evaporative cooling towers), once-through cooling systems (open loop cooling), air-cooled condensing (dry cooling), hybrid wet and dry cooling systems (hybrid cooling), and pond cooling systems.

Figure 7 shows the operational water consumption factors for different electricity generating technologies. The figure is in the form of box and whisker plots. Whisker ends represent maxima and minima of operation consumption. Upper and lower ends of boxes represent 75th and 25th percentile, respectively. Horizontal lines in boxes represent medians (50% of observations).

Water in the West (2013) among others summarised the technologies used for cooling in the USA. Their findings appear in Table 2.

**Table 2: Power plant cooling technologies used in the USA**

	NETL (2009) Based on Platts (2005)				EIA Forms 860 & 923 (2012)					
Generation Type	Wet Recirculation	Once-through	Cooling Ponds	Dry	Wet Recirculation	Once Through		Cooling	Dry	Hybrid
						Freshwater	Seawater			
Coal	48.0%	39.1%	12.7%	0.2%	46.3%	33.5%	2.8%	17.0%	0.4%	0.0%
						36.3%				
Fossil Non-Coal	23.8%	59.2%	17.1%	0.0%	30.2%	28.1%	25.5%	16.2%	0.0%	0.0%
						53.6%				
Combined Cycle	30.8%	8.6%	1.7%	59.0%	71.3%	7.4%	6.1%	2.9%	11.7%	0.6%
						13.5%				
Nuclear	43.6%	38.1%	18.3%	0.0%	36.0%	31.1%	20.2%	12.7%	0.0%	0.0%
						51.3%				
Total	41.9%	42.7%	14.5%	0.9%	49.1%	26.7%	8.5%	12.7%	2.9%	0.1%

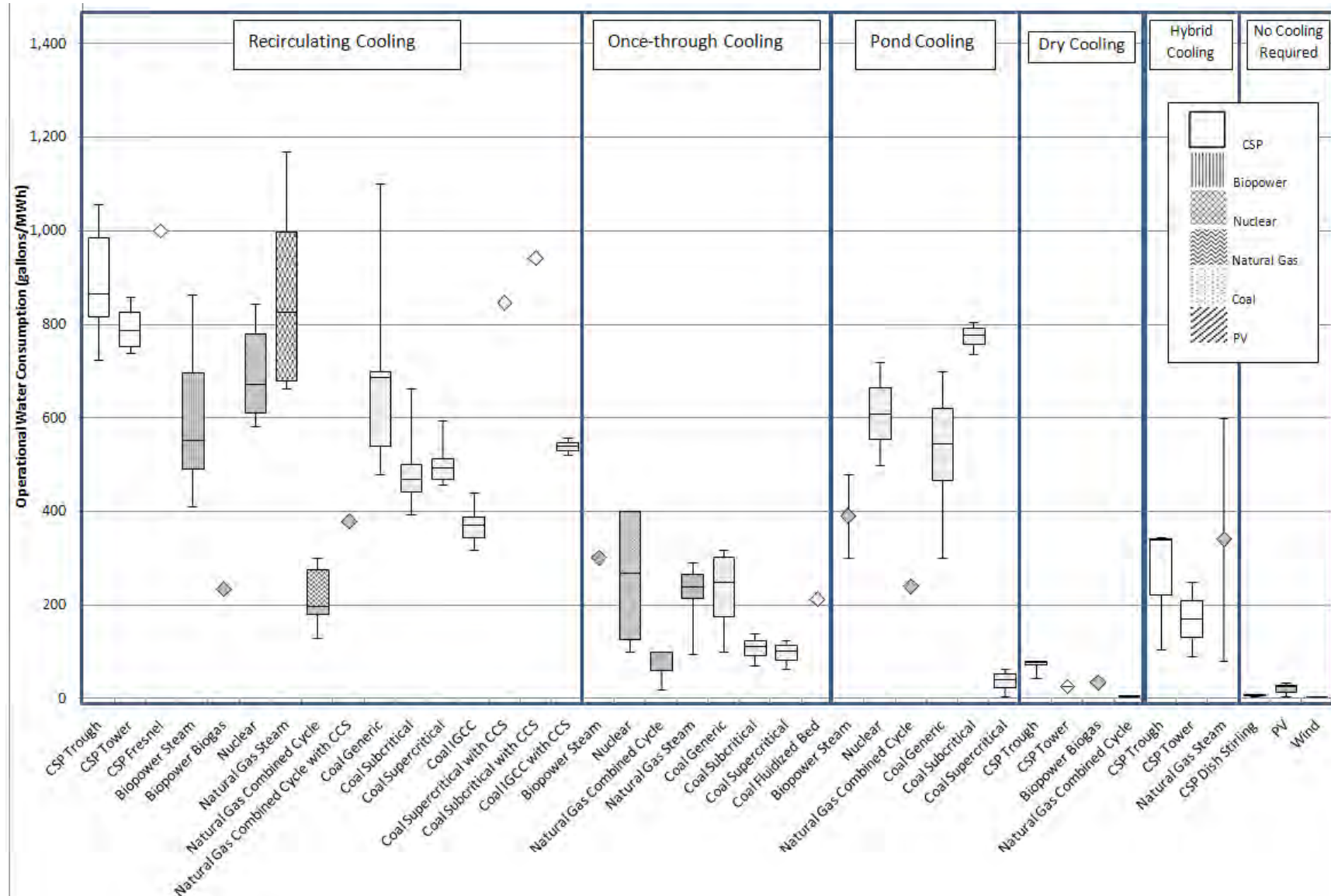
*Source: Adapted from Water in the West, 2013.*

The authors further concluded that their analysis shows that water intensities exhibit strong variability within fuel types and cooling types. Yang and Driegielewski (2007) investigated the major determinants of water withdrawal and consumption in terms of types, cooling system types; operation conditions; and water sources. Klett et al. (2007) used detailed process models of state of the art fossil fuel power plants to benchmark water use plant performance.

Chandel et al. (2011) investigated how climate change policy involving a price on carbon would change the mix of power plants and the amount of water they withdraw and consume to generate electricity. The authors find that under all the climate-policy scenarios, fresh water withdrawals decline between 2% and 14% relative to a business-as-usual scenario of no U.S. climate policy. Furthermore, water used decreases as the price on CO<sub>2</sub> under the climate policies increases. At relatively high carbon prices (>\$50/tonne CO<sub>2</sub>), however, retrofitting coal plants to capture CO<sub>2</sub> increases freshwater consumption compared to business as usual in 2030. The analysis suggests that climate policies and a carbon price will reduce both electricity generation and freshwater withdrawals compared to business as usual unless a substantial number of coal plants are retrofitted to capture CO<sub>2</sub>.

Zemlick et al. (2013) explored the suitability of using non-traditional sources of water, namely wastewater and brackish ground water for future thermoelectric cooling in 22 continental Electricity Market Module Regions and linked them to electricity demand to 2013. They argued that while neither resource can meet all future demand by thermoelectric generation, when added to the existing water supply and management portfolio, they provide significant augmentation to existing traditional water supplies.

A number of studies investigated the effects of climate change on the European power sector (van Vliet, 2013; Rübhelke et al., 2011). Hydropower and thermoelectric (nuclear and fossil-fuelled) power plants currently contribute more than 91% of total electricity production in Europe. The investigations show that the combination of increased water temperatures and reduced summer river flow under climate change is likely to affect both hydropower and thermoelectric power generating capacity in Europe, with distinct impacts on electricity prices.



**Figure 7: Operational water consumption factors for electricity generating technologies**

IGCC: Integrated gasification combined cycle; CCS: Carbon capture and sequestration; CSP: Concentrating solar power; 1 US gallon = 3.785 litres.

(Source: Macknick et al., 2011)

## 2.3 Water demand forecasting

There are a limited number of investigations in the open literature forecasting water demand for electricity generation. As already discussed lack of detailed data contributes to that scarcity. Examples of relevant investigations include the following:

Feeley et al. (2008) developed 25 year forecasts of thermoelectric water use in the USA. The authors used a set of model plant profiles essential categories broken out by plant and cooling system configuration. For each profile, associated water withdrawal and consumption factors were calculated with EIA survey data. Water use was projected using different scenarios specifying electricity demand, generation mix (model plants) and penetration of water use reduction technologies.

King et al. (2008) projected power plant water use in the state of Texas over a 10 year time frame. The study focused on individual plants and when data were not available default withdrawal and consumption factors were used.

The National Energy Technology Laboratory (2009) estimated future freshwater withdrawal and consumption from domestic thermoelectric generation sources for five cases, using regional projections for capacity additions and retirements. The results suggest that carbon capture technologies could increase the water demand of thermoelectric power plants and indicate that consumption is expected to increase in all cases.

NETL (2013) updated the previous reports. The broad methodology is as follows:

**Step 0: Estimate future capacity and generation:** *Annual Energy Outlook* 2013 projections of capacity and generation to 2035 are used in the analysis to calculate future thermoelectric generation water withdrawal and consumption.

**Step 1: Develop model plants:** The existing thermoelectric fleet was segregated into numerous configurations, called “model plants”.

**Step 2: Calculate water withdrawal and consumption factors:** For each model plant defined in Step 1, water withdrawal and consumption factors were calculated

**Step 3: Quality Control and Model Validation** Step 3 represents efforts designed to ensure quality control for the analysis. The water withdrawal and consumption factors that were used in the model were obtained through a rigorous statistical evaluation. Box-plots of data were used to identify outliers.

**Step 4: Develop Future Cases** Future water withdrawal and consumption for the U.S. thermoelectric generation sector are estimated for five cases – one reflecting status quo conditions, two reflecting varying levels of regulations regarding cooling water source, one incorporating dry cooling and one reflecting regulatory pressures to convert existing once-through capacity to re-circulating capacity.

**Step 5: Calculate regional withdrawal and consumption to 2035**

Step 5 integrates the water withdrawal and consumption factors calculated in Step 2 with the various cases defined in Step 4 to assess the regional and national impacts on water withdrawal and consumption out to 2035.

A few studies have attempted to analyse water usage patterns in different sectors in South Africa (e.g. Jansen et al. 2006; Rousseau et al. 2001).

However, the forecasting of water usage in power generation is an aspect that requires further attention and is analysed further in this report. At this juncture the introduction of the South African coal based electricity generation is warranted before delving into water forecasting.

## 2.4 Coal based electricity production in South Africa

South Africa has 13 coal power plants of which ten are base load power plants while three are return to service power plants used for peak demand times (Eskom, 2014). Base load power stations are those that operate to deliver base (or normal) demand. Peak load power stations are operated or switched on in conjunction with base load plants to supply power during periods of peak demand. The current fleet of coal power plants use a combination of technologies for cooling. Figure 8 and Table 3 provides a summary of the location of the coal power plants in South Africa and the cooling technologies used in each power plant respectively.

Table 3 shows the cooling technologies being used in Eskom's current and future coal-fired plants; their geographic location and the year of their completion. As discussed, the wet recirculation cooling technology, uses cooling water through condenser tubes with steam on the outside. The temperature variation between the water and steam causes condensation. The warm water in the condenser is collected in the cooling tower where an upward draft of air removes the heat. The cooled water is then recirculated to the condenser. A major drawback of this technique is that water is lost through evaporation when the warm cooling water comes in contact directly with air (Eskom, 2010).

**Table 3: Cooling technologies in Eskom coal power stations (current and future)**

Category	Name	Cooling technique	Location	Year of completion
Base load	Arnot	Wet recirculating	Mpumalanga	1975
	Duvha	Wet recirculating	Mpumalanga	1984
	Hendrina	Wet recirculating	Mpumalanga	1970
	Kendal	Indirect dry	Mpumalanga	1993
	Kriel	Wet recirculating	Mpumalanga	1979
	Lethabo	Wet recirculating	Limpopo	1991
	Majuba	Wet recirculating and dry	Mpumalanga	2000
	Matimba	Direct dry	Mpumalanga	1991
	Matla	Wet recirculating	Mpumalanga	1983
	Tutuka	Wet recirculating	Mpumalanga	1990
Return-to-service	Camden	Wet recirculating	Mpumalanga	1967
	Grootvlei	Wet recirculating and dry	Mpumalanga	1973
	Komati	Wet recirculating	Mpumalanga	1966
New build	Medupi	Direct dry	Limpopo	On-going
	Kusile	Direct dry	Mpumalanga	On-going

*Source: Adapted from Wassung, 2010.*



# Eskom power stations

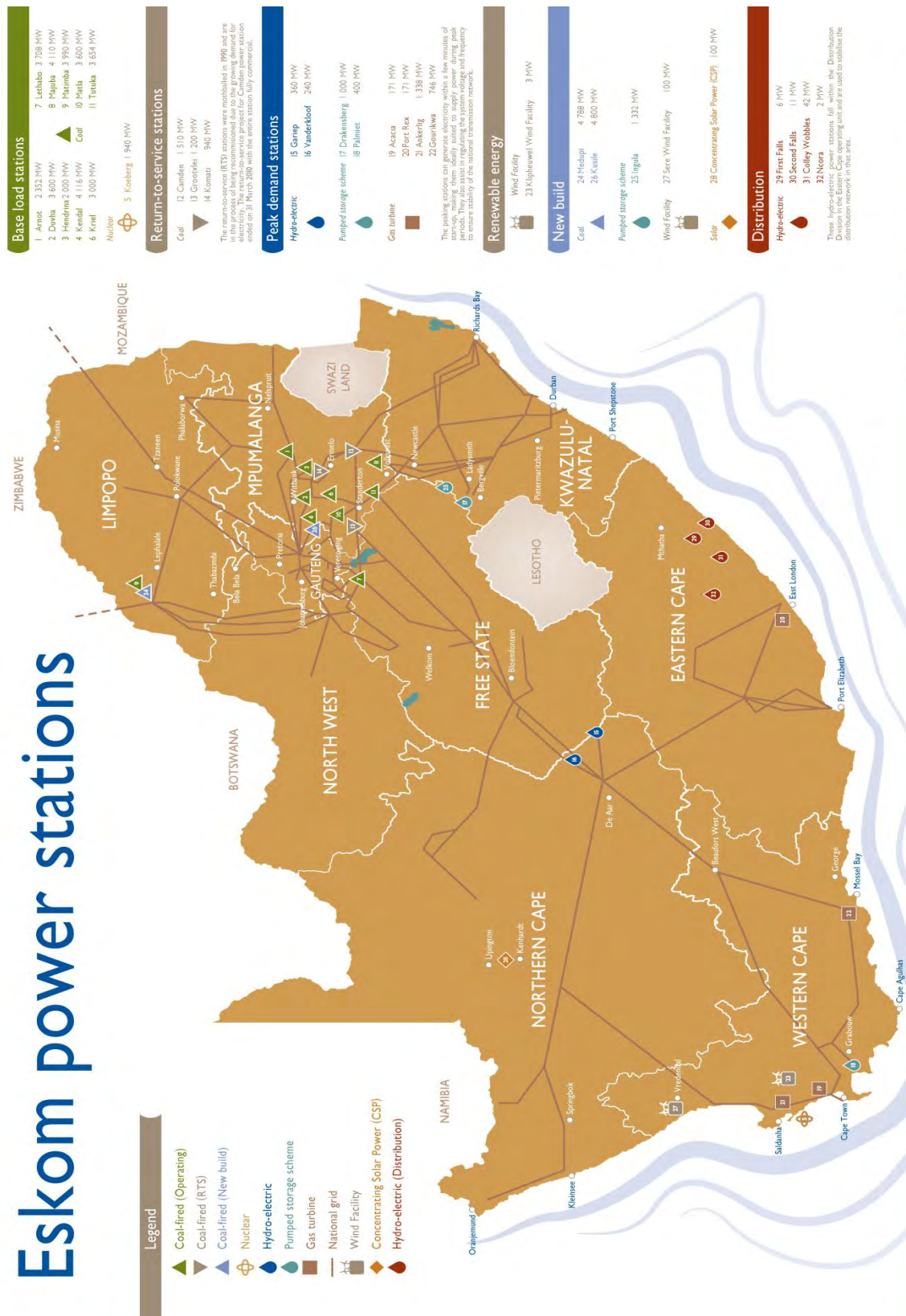


Figure 8: Eskom power plants

Of the 10 existing base load coal power plants, eight use wet recirculation cooling technologies while two (Kendal and Majuba) use dry cooling approaches. The dry cooling technology uses air instead of water in the heat exchange mechanism to cool down high temperature steam.



In summary, the need for water use forecasting in the topic of energy-water nexus, is essential in South Africa. The literature review identifies that European researchers place particular emphasis on the effects of environmental changes on the demand for water. Furthermore the review shows that total water usage and water usage consumption factors are primarily dependent on the type of cooling technology used. However other factors such as physical location of power plant, efficiency of power plant, type of boiler used, type of coal used, etc., are also important factors when estimating water usage patterns. Therefore accurate accounting of water consumption has to be attributed based on the priority of the factors listed above. The more important quantifiable technical factors for South African coal power plants are discussed in the following chapter along with the assumptions used within the methodology.

## Chapter 3: Methodology

In this chapter the baseline assumptions and methodology are presented. The first section provides the criteria on which the baseline assumptions have been derived, while the second section explains the methodology and the mathematical model.

### 3.1 Assumption list

The assumptions used within this study are based on the foundations of the revised Integrated Resources Plan (IRP) baseline case step 5 (BCS5) (IRP 2013, p75). The revised IRP takes into account the ministerial determinations made post 2010, by taking into consideration the allocation of renewable programmes in 2011 and 2012. However, the current study has taken the liberty of making certain realistic assumptions based on the current state of the South African economy and the electricity industry.

The assumptions are structured to provide four sets of information on varied, but related topics, namely;

- Assumption differentiation between current study and BCS5 scenario.
- Electricity capacity demand analysis
- Technical assumptions
- Scenario analysis

The assumptions are listed in tabular form (Table 4) and are contrasted with the revised IRP BCS5 assumptions.

**Table 4: Assumption differentiation between current study and BCS5 scenario**

Criteria	Current study	BCS5 scenario
Return to Service (RTS) fleet	The water forecasting study assumes that the RTS fleet will be decommissioned by the year 2020. This assumption is in order to prevent increasing water usage per unit of electricity generated.	The BCS5 scenario decommissioning schedule (IRP 2013, p60) assumes that the RTS fleet will be operational until the year 2030. The phase out is scheduled over a 10 year period starting from 2020.
Existing fleet	The current study assumes that the life of older power plants such as Hendrina, Arnot and Kriel will be extended to operate fully or partially as an alternative to the RTS fleet which has poorer water efficiency factors.	The BCS5 scenario assumes power plants Hendrina, Arnot and Kriel (total of 7200 MW) to be fully decommissioned before the year 2030.
New build	The new build power stations of Medupi and Kusile are expected to come online the national grid between the years on 2015 & 2020. This is in conjunction with the decommissioning of the RTS fleet.	Medupi and Kusile are categorised as part of the existing fleet. The timelines set for the first units of these power plants are 2014 and 2015 respectively.
New coal technologies	The current study acknowledges the presence of new coal technologies in the future of the coal road map in South Africa but refrains from estimating water usage patterns in these technologies because of the ambiguity associated with these technologies on a commercial scale locally.	The BCS5 scenario allocates 2450 MW of capacity associated with new coal technologies such as underground coal gasification (UCG), advanced pulverised fuel (PF) and fluidised bed combustion (FBC) technologies.
Total capacity	36900 MW	36230 MW

### ➤ **Electricity capacity demand analysis**

Electricity supply and demand are in a critical stage in South Africa. At this point in time the installed capacity, taking into account the base load power plants (35000 MW) and RTS fleet (3000MW) is a total of approximately 38000MW while the nominal capacity is estimated to be 35700MW (Eskom, 2014a).<sup>1</sup> Based on the IRP BCS5 the estimated installed capacity for existing coal technologies<sup>2</sup> (which includes Medupi and Kusile at 9600MW) for the year 2030 is 36900 MW (IRP 2010, p20 and p75). Therefore installed capacity in 2030 for currently operating base load plants would be 27300 MW which is after the decommissioning of the RTS fleet (IRP 2010, p60).

At current levels of generation (213 TWh), existing power plants are operating at a capacity factor of 77.8 % which is typically high and unsustainable for current fleet of older power plants. The presence of the new build power plants (Medupi and Kusile) with a capacity of 9600 MW is bound to reduce the load on the existing fleet. The decommissioning of the RTS fleet would bring total available coal power installed capacity to 36900 MW (with existing base load contributing 27300 MW and new build at 9600 MW).

However it is critical to note that even if the new build power plants are operated at a capacity factor of 80% which is realistic for the type of technology, the strain on the existing base load plants and the national grid will not ease unless other newer power plants (nuclear, renewable, gas, etc) are available.

The current study projects that based on current demand trends, taking into account availability of the new build power plants and decommission of the RTS fleet in combination with the current base load power plants, total demand could reach 255 MWh by the year 2030, which can be supplied at 78.4% capacity factor. These assumptions are in line with Eskom's capacity factor assumptions of 80:10:10 for the coal power plant fleet, which means that 80% of the total capacity is available any time, while 10% is scheduled for planned outages and the remaining 10% scheduled for unplanned outages.

### ➤ **Technical factors:**

The current study takes into account primary power plant operational parameters in the forecasting model, which are;

- Deduced capacity factor
- Boiler technology
- Cooling type technology
- Thermal efficiency

The aforementioned factors are the major technical determinants that affect the performance of a coal power plant and thereby directly and indirectly altering the water usage and consumption trends.

### ➤ **Scenario analysis:**

The generation study provides analysis based on multiple scenarios categorised on technology type and load type; those being:

---

<sup>1</sup> These figures do not take into account the decrease in nominal capacity due to unplanned maintenance which has led to the 2014-2015 load shedding scenario.

<sup>2</sup> Existing coal technologies according to the IRP include current base load power plants and Medupi and Kusile. These power plants are categorised separate from new coal technologies.

- Base load
  - wet cooled base load
  - dry cooled base load
- RTS analysis
- New build analysis
- Combined cases

The analyses of these scenarios are necessary and relevant when taking into account the current fleet of South African coal power plants. The scenario analysis also takes into account projections for new build power plants Medupi and Kusile, which are expected to be part of the national grid within the next two years.

### 3.2 Mathematical model

The pathway used to estimate (or forecast) the water usage consumption is based on the development of a model which forms a combination of steps uniquely developed for this study and from those mentioned within the NETL methodology (in section 2.3). Since long term generation output forecasts or water usage factors are not available for individual South African coal-fired power plants, a mathematical forecasting model had to be developed to estimate generation output. The forecasting model relies on historical water consumption and electricity generation data, for each power plant, from the year 1989 to 2012, obtained from Eskom's data archives. The forecasting technique is based on a moving average forecast in order to accommodate average yearly values of water usage and generation output estimates (Box et. al., 2013).

The method uses the estimation steps used in the NETL (2013) methodology. However the forecasting technique used during the estimation steps varies from the NETL methodology. The primary steps involved in the devised methodology are as follows:

- 1) Estimate future long-term generation output of each coal fired power plant
- 2) Estimate future water consumption factor for each power plant based on future generation output and average system thermal efficiency
- 3) Estimate total water usage from steps 1 and 2
- 4) Scenario building based on technology and time-period

#### ➤ Step 1

The estimation of long-term generation output is based on historical generation patterns obtained from the electricity utility Eskom's, data archives.<sup>1</sup> Since generation output can be highly irregular from year to year, a mathematical model had to be developed which took into account historical data patterns. A variant of the basic extrapolation formula had to be developed to take into historical data averages.

The basic linear extrapolation formula can be indicated as:

---

<sup>1</sup> In this study demand forecasting was not considered because of the variable (or external) conditions affecting electricity demand, such as economic growth, commodity prices, union strikes, maintenance outages, etc. The methodology used in this study does not model external shocks.

$$(GC)_{n+1} = (GC)_{n-1} + \left[ \frac{[(n+1)-(n-1)]}{[n-(n-1)]} \right] * [(GC)_n - (GC)_{n-1}] \quad (1)$$

where

GC = generation output in kilowatt hour (kWh)

n = year of analysis

However, the basic extrapolation formula cannot be used to estimate a long-term generation forecast because the basic formula does not take into account long term generation trends. A ten year moving average is derived as shown in equation 2 to take into account historical generation patterns. This logic can be validated because most of Eskom's coal fired base load power stations have been running on consistently high capacities due to high demands.<sup>1</sup>

$$(GC)_{n+1} = (GC)_{n10avg}^{i=n-1 \text{ to } n-10} + \left[ \frac{[(n+1)-n_{10avg}^{i=n \text{ to } n-9}]}{[(n)-n_{10avg}^{i=n-1 \text{ to } n-10}]} \right] * [(GC)_{n10avg}^{i=n \text{ to } n-9} - (GC)_{n10avg}^{i=n-1 \text{ to } n-10}] \quad (2)$$

where,

$(GC)_{n+1}$  = generation output in kilowatt hour in year (n+1) (kWh)

$(GC)_{n10avg}^{i=n \text{ to } n-9}$  = average generation output over a 10 year period (n to n – 9)

$(GC)_{n10avg}^{i=n-1 \text{ to } n-10}$  = average generation output over a 10 year period (n – 1 to n – 10)

$n_{10avg}^{i=n-1 \text{ to } n-10}$  = 10 year time sum average from year (n – 1) to (n – 10)

The generation output for year (n+1) is determined by multiplying the 10 year time average with the difference in the average generation output over a 10 year period. This term is then summed with average generation output from over a 10 year period two years prior to (n+1). For example, the generation output for year 2017 is determined by, first multiplying the difference of the average generation output between the periods 2016 to 2007 and 2015 to 2006 with the time sum average coefficient. This term is then summed with the average generation output from the period 2015 to 2006.

$$(GC)_{2017} = (GC)_{n10avg}^{i=2015 \text{ to } 2006} + \left[ \frac{[(2017)-n_{10avg}^{i=2016 \text{ to } 2007}]}{[(2016)-n_{10avg}^{i=2015 \text{ to } 2006}]} \right] * [(GC)_{n10avg}^{i=2016 \text{ to } 2007} - (GC)_{n10avg}^{i=2015 \text{ to } 2006}] \quad (3)$$

## ➤ Step 2

The next step involves estimating the long term consumption factor of the power plants by also including the influence of change in generation output and system thermal efficiency. The formula derived to estimate the consumption factor can be generalised as an exponential weighted moving average (EWMA) formula which can be expressed as,

$$(CF)_{n+1} = (CF)_n \left[ \frac{1}{(1+\% \alpha)} \right] + (CF)_n \left[ \frac{(GC)_{n+1} - (GC)_{n10avg}^{i=n \text{ to } n-9}}{(GC)_{n10avg}^{i=n \text{ to } n-9}} \right] \quad (4)$$

where,

---

<sup>1</sup> Though electricity demand is usually linked to GDP growth, the current electricity crisis has caused a negative impact on growth because of the lack of available electricity supply. Therefore linking electricity demand to economic growth in the current situation could generate a distorted impression.

$(CF)_{n+1}$  = Consumption factor in litres per kilowatt hour in year (n+1) (l/kWh)

$(CF)_n$  = Consumption factor in litres per kilowatt hour in year (n) (l/kWh)

$\% \alpha$  = percentage change in  $\alpha$ , where  $\alpha$  is system thermal efficiency

The  $\alpha$  values used for base load power plants are derived from Eskom's annual reports over the past 10 years. Sub-critical power plants which form the core of the coal power plant fleet have a design value of 38% whereas super-critical power plants (which include Medupi and Kusile) have a design value of 42% (IEA, 2012).

### ➤ Step 3

Based on the calculations made in steps 1 and 2, the water consumption for each power plant can be determined by multiplying the results of equation (2) and (4). Therefore water consumption can be denoted as:

$$(WC)_{n+1} = (GC)_{n+1} * (CF)_{n+1} \quad (5)$$

### ➤ Step 4

Multiple scenarios are developed based on technology type and time of introduction of new technologies. Examples of multiple scenarios include consideration of Return to Service (RTS) power plants. The RTS power plants included are Camden, Grootvlei and Komati. These power plants are considered to have system thermal efficiencies smaller than the existing base load power plants. The reduced system thermal efficiency for RTS fleet is taken into consideration when calculating the water consumption factors.

The RTS fleet is modelled based on the assumption that it will be retired by the year 2020 when the new build power stations of Medupi and Kusile will be fully operational (also taking into account possible delays). However, the first units of Medupi and Kusile are modelled to be operational in the year 2015 and 2016 respectively. The water consumption factor profile of Medupi and Kusile is estimated by following the water consumption factor profile of Matimba power station which also uses dry cooling technology. However, an improved system thermal efficiency factor is considered for the new build power plants because of the supercritical technology that will be used which will add to improved efficiencies.

The scenarios are developed for three separate categories based on generation profile, namely

- base load
- return to Service (RTS)
- new build

Another form of classification is based on the type of cooling technology used within the current base load and RTS fleet as well as the new build power plants, which can be differentiated as,

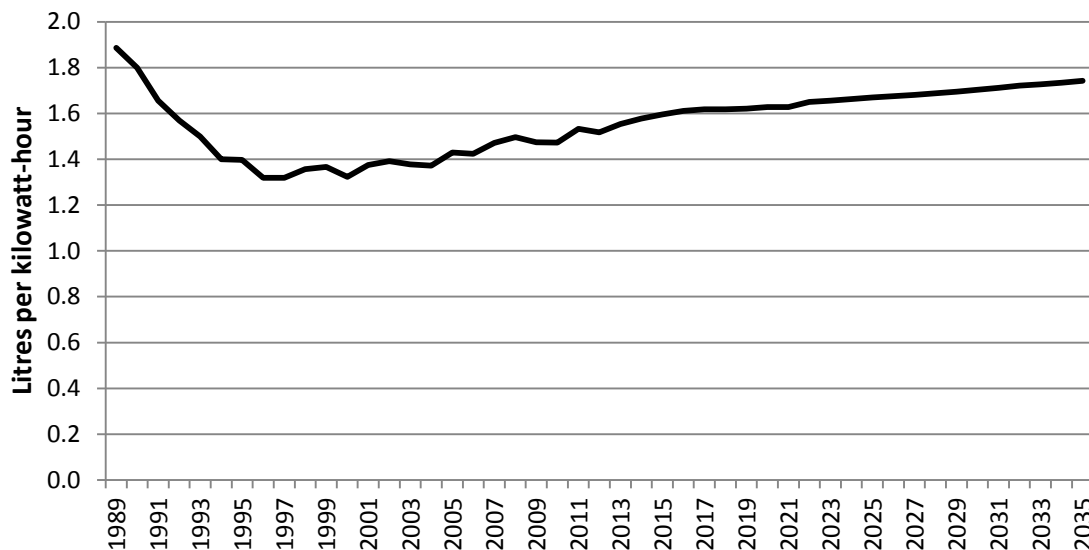
- wet cooling
- dry cooling

## Chapter 4: Results

Steps 1 to 3 in the previous chapter are computed and analysed based on the multiple scenarios listed in step 4 of the previous chapter. The results of the analysis are presented in this section based on generation profile and cooling technology.

### 4.1 Base load analysis

The base load water consumption factor profile, which includes the power stations Arnot, Hendrina, Duvha, Kriel, Kendal, Tutuka, Matla, Lethabo, Matimba and Majuba (also mentioned in Table 3), is presented first in Figure 9.



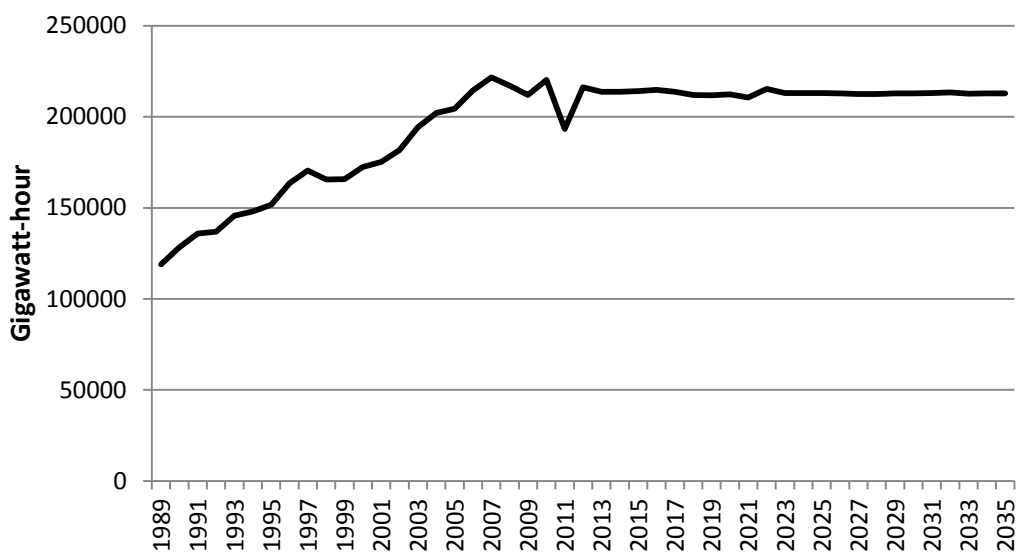
**Figure 9: Base load power plant water consumption factor projection**

The figure above shows a profile which has seen a sharp decline in the early nineties. This is attributed to the addition of the dry cooling power plants, Kendal and Matimba which has helped in lowering the overall base load consumption factor. However, since the mid-nineties there has been a steady increase with the increase being sharper within the last five years. The recent increase is attributed to the addition of the RTS power plants which are older and less efficient than the base load fleet. The profile from the year 2014 onwards is a projection based on decreasing system thermal efficiencies and historical consumption factors. The consumption factor profile is derived from projected generation output which is shown in Figure 10.

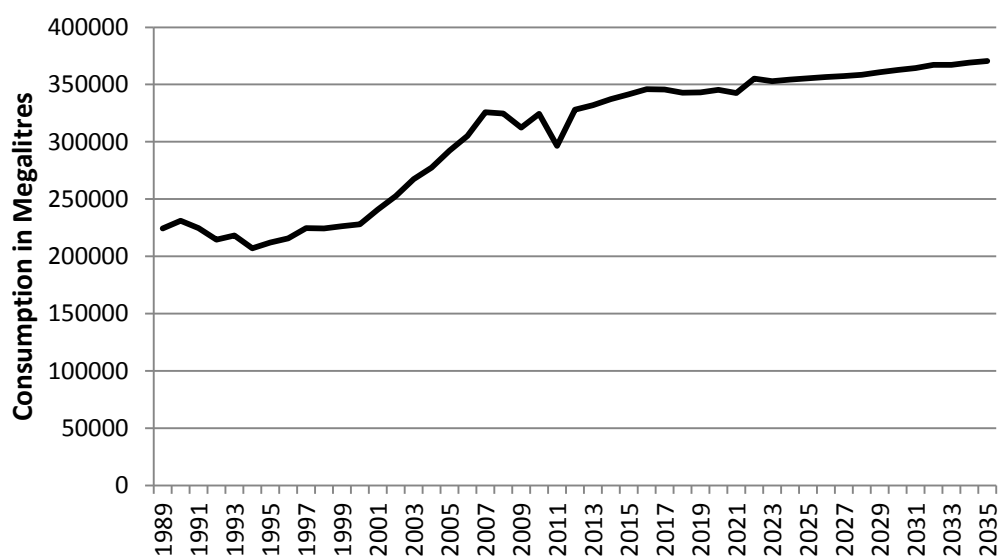
It can be seen that the base load generation output remains steady in line with roughly 213 Terawatt.hour (TWh) which is in line with the scenario that South Africa's base load capacity is being operated at maximal levels. This situation is primarily the reason why new-build power plants are being built. Combining the projections of base load capacity and water consumption factors the total water consumption is projected as shown in Figure 11.

Based on the projection in Figure 11 the total base load water consumption will increase from 332 ggalitres (in 2013) to roughly 370.5 ggalitres (in 2035) which is marginally more than a 10% escalation (over the

period). The steady increase in water consumption can be attributed mostly to the deteriorating  $\alpha$  value and the marginally increasing generation output.<sup>1</sup>



**Figure 10: Base load power plant generation output projection. Source: (Eskom, 2014) data till 2012**



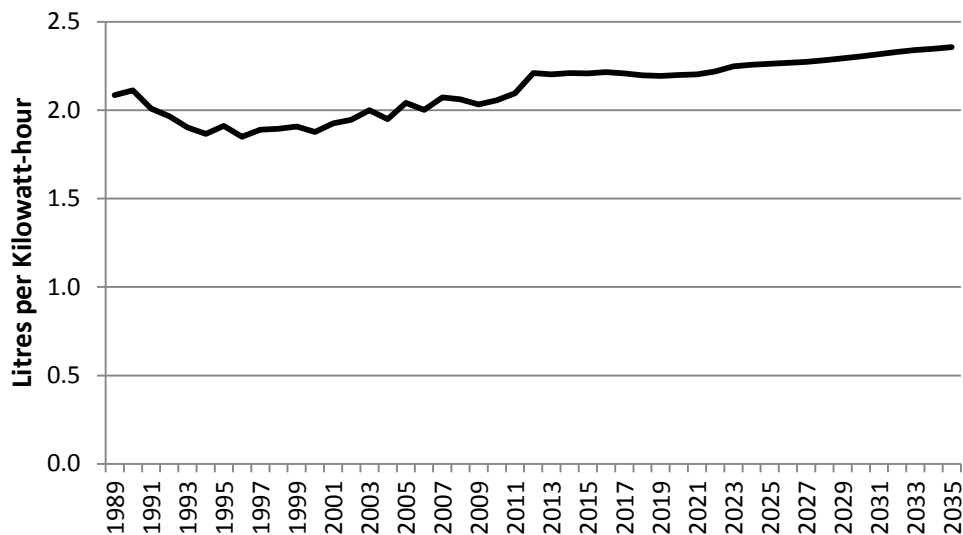
**Figure 11: Base load total power plant total water consumption projection**

<sup>1</sup> Refer to page 19-20 for description of  $\alpha$  value.



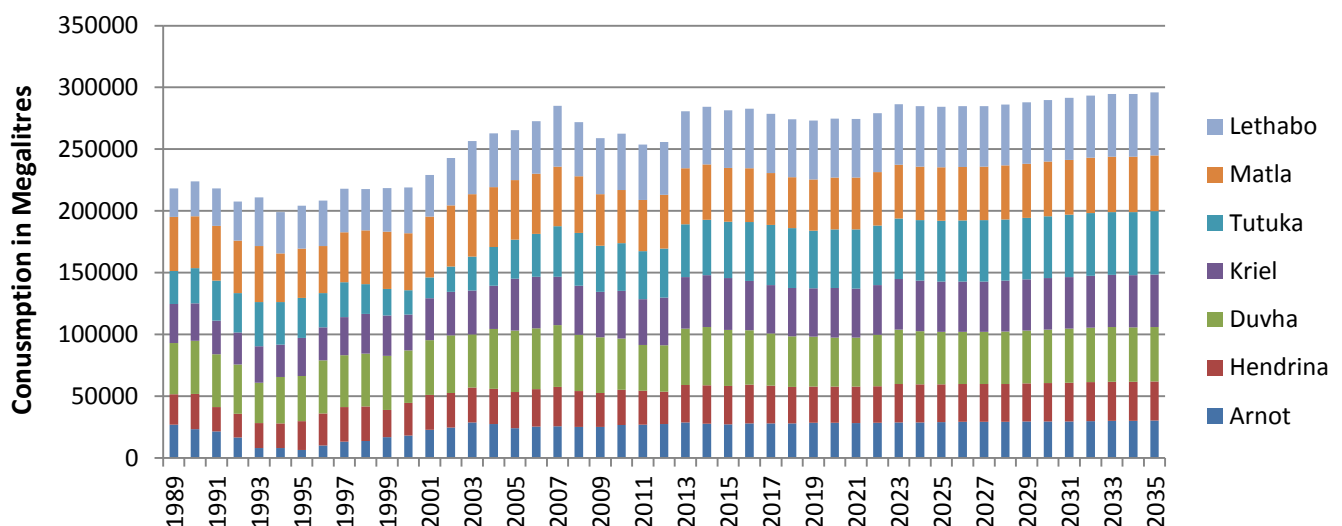
#### 4.1.1 Wet cooled base load analysis

Wet cooled base load plants include all base load plants other than Kendal and Matimba. Majuba which uses a combination of both wet and dry cooling techniques is categorised as a wet cooling plant since it generates the majority of the electricity through wet cooling techniques. Figure 12 shows the consumption factor profile for the wet cooled base load power plants.



**Figure 12: Wet cooled base load water consumption factor projection. Source: Eskom (2014) data to 2012**

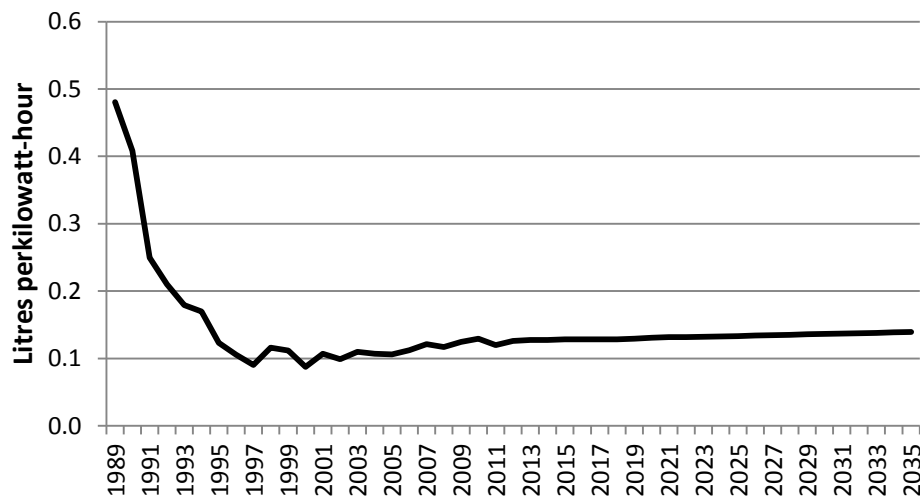
Figure 13 shows the total water consumption from wet cooled base load power plants. It can be noticed from the graph that total water consumption of individual power plants have been increasing at a very gradual pace.



**Figure 13: Wet cooled power plant total water consumption projection. Source: Eskom (2014) data to 2012**

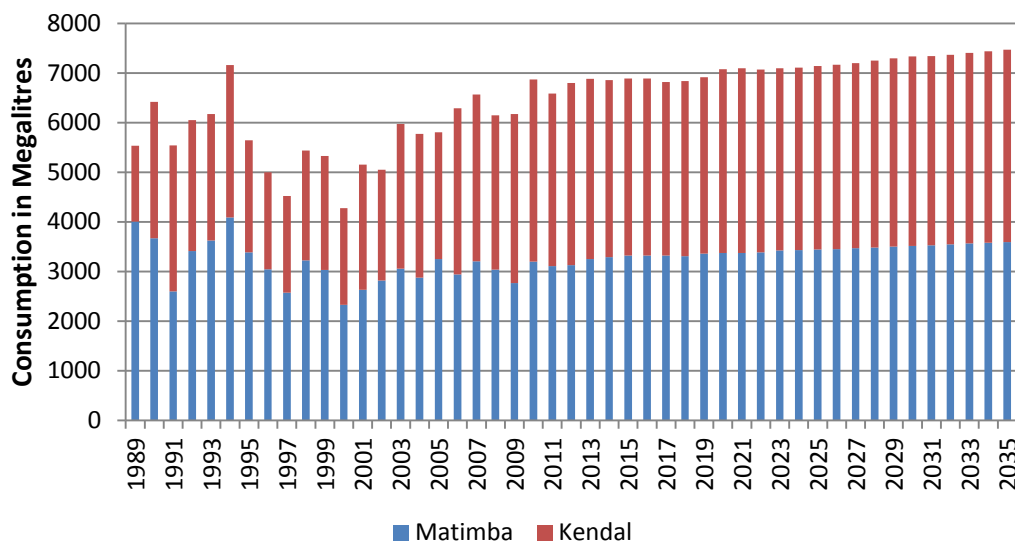
#### 4.1.2 Dry cooled base load analysis

The dry cooled power stations include Kendal and Matimba which are newer amongst the base load power station fleet. Figure 14 illustrates the consumption factor profile for the dry cooled base load power plants.



**Figure 14: Dry cooled base load water consumption factor projection. Source: Eskom (2014) data to 2012**

These consumption factors are one order of a magnitude lower than the water consumption factors of wet cooled power plants. Figure 15 indicates the total water consumption from dry cooled base load power plants.

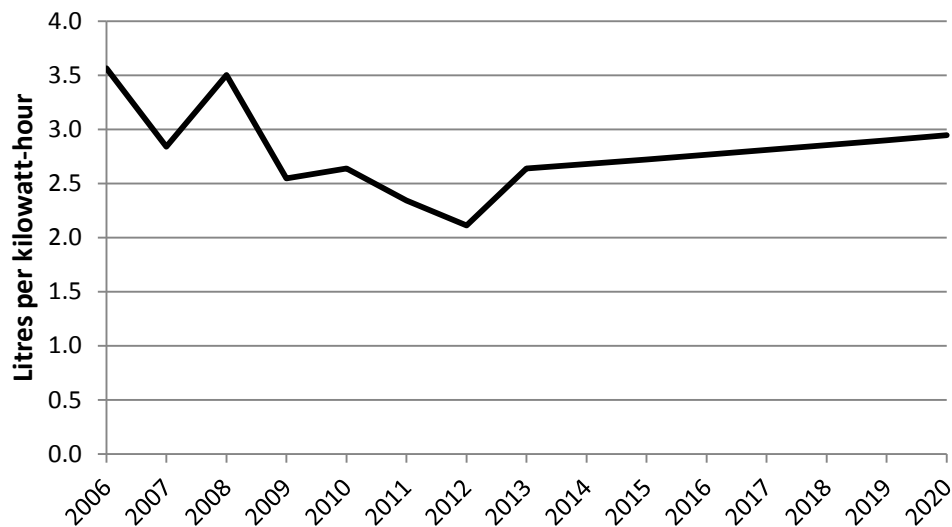


**Figure 15: Dry cooled power plant total water consumption projection. Source: Eskom (2014) data to 2012**

Comparisons between Figure 13 and Figure 15 show the difference in total water consumption of power plants using wet and dry cooling technologies.

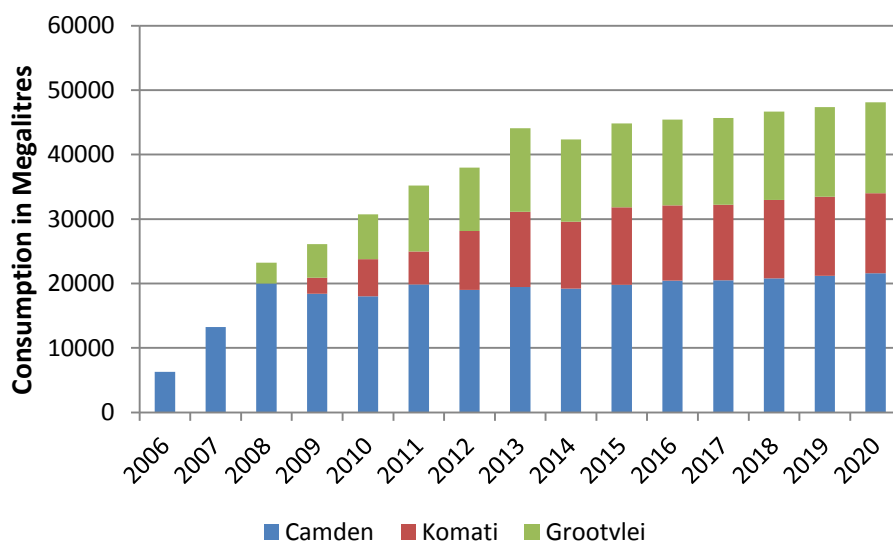
## 4.2 Return to Service analysis

The RTS fleet includes the power stations of Camden, Grootvlei and Komati which were re-commissioned between the years of 2006 and 2009 to aid the stretched base load capacity. It is assumed that these power stations will be put out of service once the new build power stations are fully operational. As a conservative choice these power stations are assumed to be operational until the year 2020. Figure 16 depicts the water consumption factor for the RTS fleet.



**Figure 16: RTS power plant water consumption factor projection. Source: Eskom (2014) data to 2012**

It can be observed that the water consumption factor of the RTS fleet is bound to rise at a higher rate than the base load fleet primarily because of the lower system thermal efficiencies. The same increases can be attributed to total water consumption of the RTS fleet as shown in Figure 17.

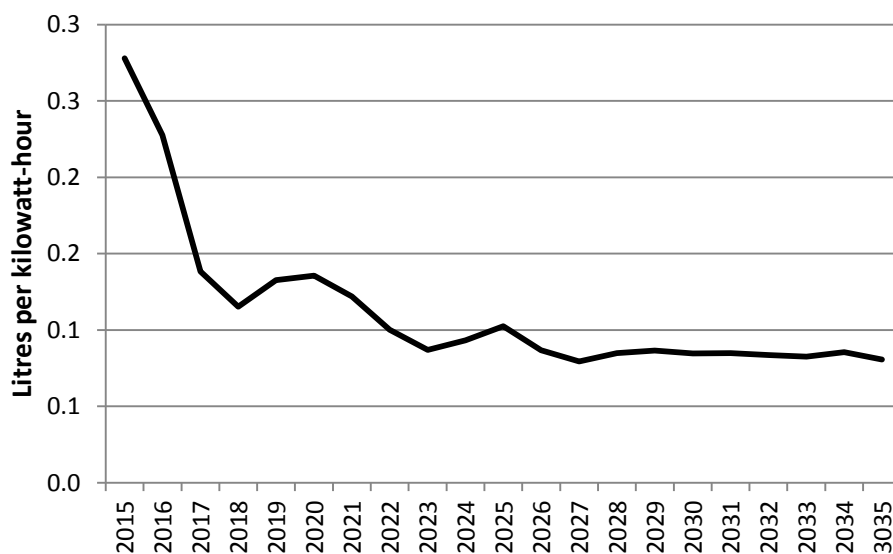


**Figure 17: RTS total power plant total water consumption projection. Source: Eskom (2014) data to 2012**

The inference therefore is that though the RTS fleet provides vital added supply during periods of peak electricity demand, the rate of water consumption associated is higher. Therefore, it is vital (from a water perspective) to retire the RTS fleet as soon as the new-build power plants can be commissioned.

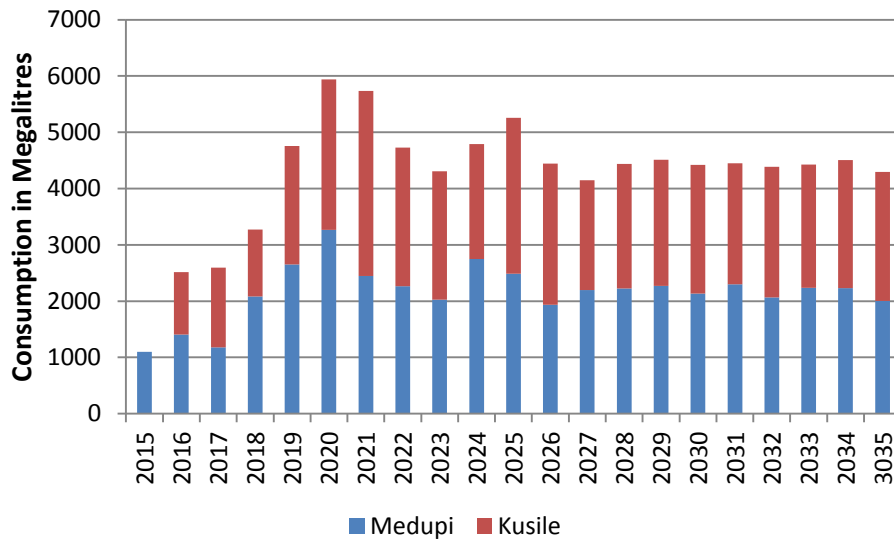
### 4.3 New build analysis

The new build power plants of Medupi and Kusile use dry cooling technologies combined with supercritical boilers which result in better power plant performance and efficiency. Since no prior data is available for either power plant the water consumption factor profile of Matimba which also uses dry cooling technology was used as a baseline. Both Kusile and Medupi were assumed to provide an average system thermal efficiency of 42%, which is the average international rating for dry cooled, supercritical coal power plants, as opposed to an average 32% for the current base load subcritical power plants. Figure 18 provides the average water consumption factor projection for both new build power plants.



**Figure 18: New build power plant water consumption factor projection**

The choice of 57% capacity factor is based on the average capacity factor of coal power plants (UK, 2014, p144). However for a supercritical power plant the capacity factor is expected to reach 80% once all units are fully operational. The generation output is projected based on the addition of 800MW units added each year starting from 2015 and 2016 for Medupi and Kusile respectively and being operated with a capacity factor of 57% which is the average capacity factor for modern supercritical power plants. Total water consumption is then determined from generation output and water consumption factor and depicted in Figure 19.

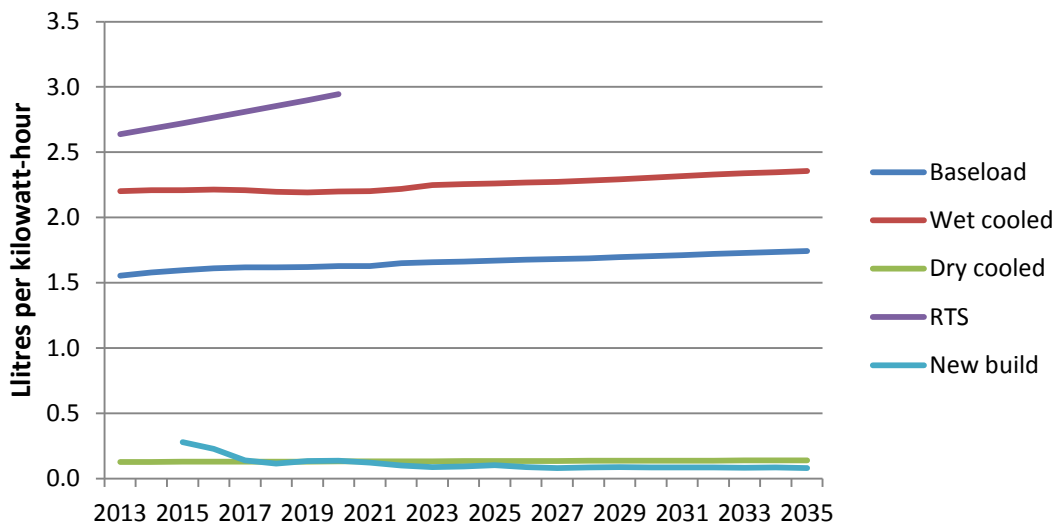


**Figure 19: New build power plant total water consumption projection**

The initial increase in water consumption in dry cooled power plants is associated with, initial refurbishment water usage before full commissioning, being added into total water usage.

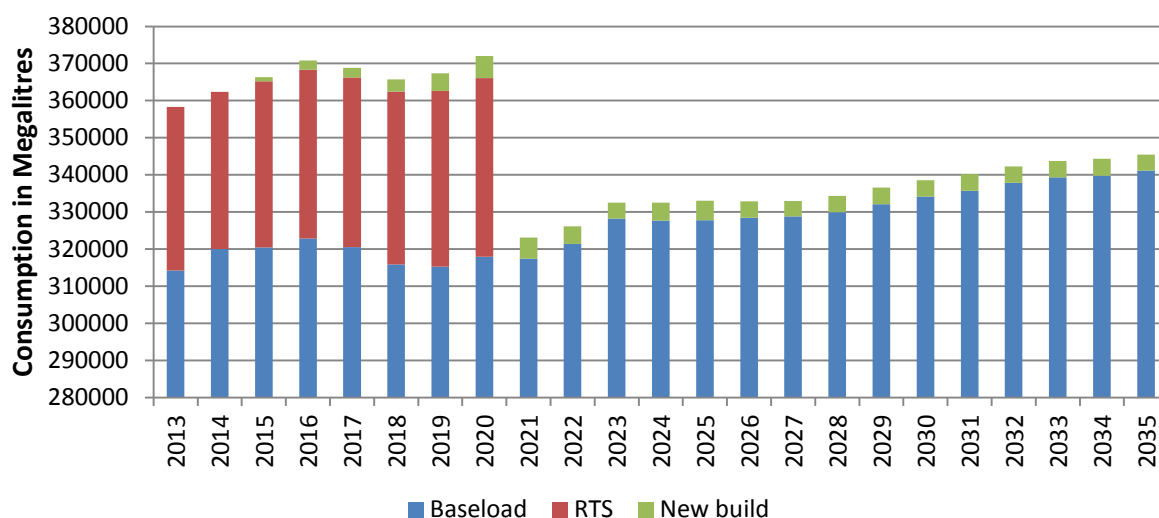
#### 4.4 Combined cases

Having analysed the various types of power plants based on cooling technology, technology type and periods of operation, a combined water consumption profile can be constructed. Figure 20 provides the consumption factor projection for the various categories of technologies and power plant profiles.



**Figure 20: Combined water consumption factor projection**

It is important to note that the base load projection shown in the figure is an average of the dry cooled and wet cooled base load power plants. The RTS consumption factor profile is significantly higher when compared with other technology types. Therefore it should be recognised that the RTS fleet, though vital in supplying peak demand capacity, is an added burden on the water consumption profile. This fact can be reiterated when observing the total water consumption profile of all coal based power plants as shown in Figure 21.



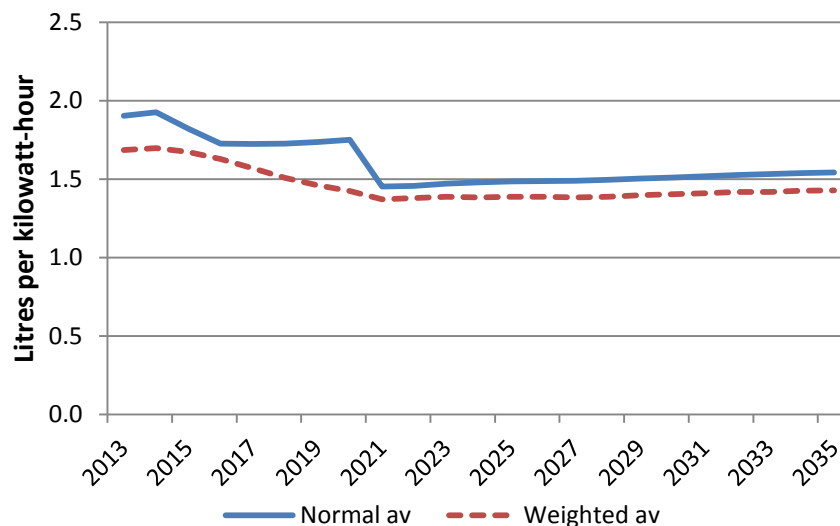
**Figure 21: Combined coal power plant water consumption projection**

It is essential to note that the y axis in Figure 21 is adjusted to scale to emphasise the contribution of the RTS fleet. It can therefore be observed that retiring the RTS fleet provides a water saving benefit of roughly 13% although the electrical output contribution of the RTS fleet is roughly between 2 to 3%.

#### 4.5 Findings

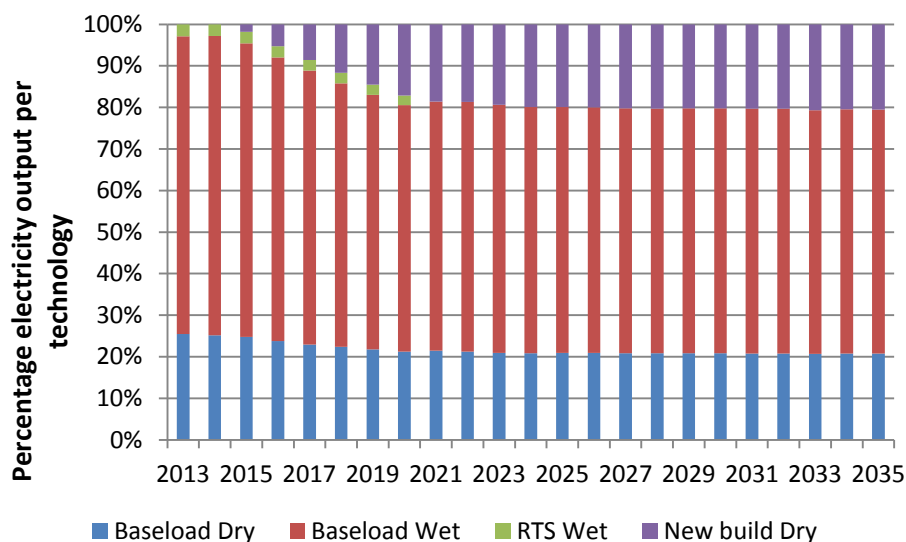
The primary finding has been the determination of the contribution of each power plant to overall water consumption profile. Of the various fleet profiles, the water consumption profile of the RTS is the most significant. Though the RTS fleet has been important in reducing the constraints placed on electricity supply due to increased demand and maintenance, lower performance parameters lead to an increased need of water while supplying electricity during peak hours. The water consumption factor for the RTS fleet is expected to reach 3 l/kWh by the year 2020. It is vital to note that the RTS fleet has to be decommissioned on a unit by unit basis as soon as the Medupi and Kusile can support the national grid. As shown in Figure 21 total water requirements are expected to increase from roughly 360 ggalitres on current levels to just above 370 ggalitres in 2021. Depending on the retirement of the RTS fleet, water requirements could be reduced to 320 ggalitres. Such a measure would bring a reduction of approximately 40 ggalitres of water per annum, which is roughly the amount of water used by one of the larger power stations such as Kriel, Tutuka, Matla or Lethabo. The shortfall caused in capacity by the retirement of the RTS fleet will be compensated by the phase by phase addition Medupi and Kusile. The new build power plants are expected to consume 4 to 5 ggalitres thereby creating a net saving of 35 ggalitres, when the RTS fleet is decommissioned.

Another important finding is the difference between the weighted average consumption factor and the normal average consumption factor of the entire coal fleet. The weighted average water consumption factor which is measure of the average water consumption based on the percentage of electricity produced by each technology type compared to the average water consumption, is depicted in Figure 22.



**Figure 22: Coal fleet average consumption forecast (weighted vs average)**

It can be observed that while the weighted average closely shadows the normal average the variations are more subtle. The variations are negated once the RTS fleet is retired by the year 2020 and the new-build power plants are fully operational. The weighted average can be better understood by analysing the percentage share of the various fleet technologies (Figure 23).

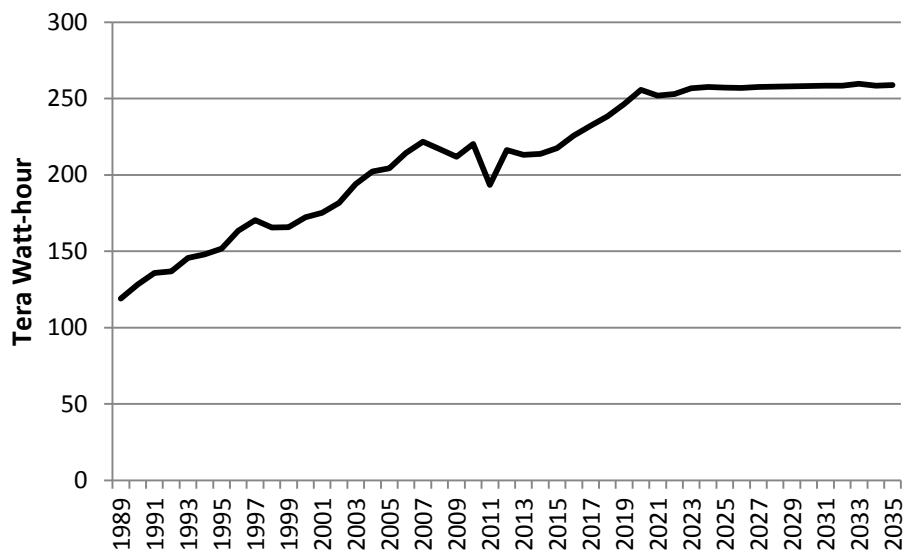


**Figure 23: Electricity output per technology fleet forecast**

Closer observation shows the weighted average tends to follow the percentage share curve of the wet cooled base load and the new build fleets which have the most dominating variations. In future it is expected that as the newer coal power plants are built and older power plants are retired, the new build fleet will be entirely integrated into the base load fleet thereby changing the coal power plant fleet to be based on a more dry cooling dominated technology.

An important concurrent finding is the forecast of total electricity generated. The forecasts show that the expected output from the coal power plant fleet could reach 260 TWh by the year 2035. These forecasts

are in accordance with the expected installed capacity of 36900 MW being operated at a capacity factor of 80%. The expected forecast is depicted in Figure 24.



**Figure 24: Combined coal fleet generation forecast. Source: Eskom (2014) data to 2012**

The forecasts of total water consumption (Figure 21), average normal/weighted water consumption (Figure 22), electricity generation mix per technology type (Figure 23) and coal fleet generation output (Figure 24) provide a detailed background of the water usage patterns in the coal based electricity generation industry.



## Chapter 5: Conclusions and Recommendations

---

### 5.1 Conclusions

Based on the findings in Chapter 4, the following conclusions can be deduced:

- Water consumption factor forecasts of dry cooled power plants (ranging from 0.1 l/kWh to 0.15 l/kWh) are expected to be one order of a magnitude lower than wet cooled power plants (ranging from 2.2 l/kWh to 2.4 l/kWh).

*Inference:* Water consumption of wet cooled is bound to increase based on current trends. This can be mainly attributed to the decreasing efficiency of wet cooled power plants. Suggested measures to increase efficiency include actions such as coal and air flow optimisation, heat loss recovery, coal drying, improved coal quality, etc.

- Water consumption factor for the RTS fleet is expected to reach 3 l/kWh by the year 2020.

*Inference:* The RTS power plant water consumption factor and total water consumption profile are higher compared to the base load fleet primarily because of lower performance parameters, such as reduced efficiency.

- Total water requirements are expected to increase from roughly 360 ggalitres on current levels to just above 370 ggalitres in 2021.

*Inference:* Depending on the retirement of the RTS fleet, total water requirements could be reduced (by 12% to 15%) to 320 ggalitres. Such a measure would bring a reduction of approximately 40 ggalitres of water per annum, which is roughly the amount of water used by one of the larger wet cooled power stations such as Kriel, Tutuka, Matla or Lethabo.

- Retirement of the RTS fleet has to be performed in conjunction with the commissioning of new build power plants.

*Inference:* RTS power plants are located in severely water constrained WMAs, Olifants and Inkomati. The gradual retirement of the RTS fleet could provide added water capacity in these WMAs.

- Based on the projection the total base load water consumption will increase from 332 ggalitres in 2013 to roughly 370.5 ggalitres during 2035.

*Inference:* The new build power plants that will be using dry cooling technologies are expected to perform more efficiently than the existing dry cooled power plants because of the use of super critical boilers.

### 5.2 Recommendations for future work

Based on the conclusions certain areas of scope, that will augment decision making in electricity based water usage include:

- Credible and verifiable assessment of water usage patterns for new coal technologies.
- Mapping of water usage of coal power plants in comparison with water inventories in water deficient WMAs.
- Impact of emission mitigating technologies on water usage.
- Estimation of water usage patterns in renewable energy technologies.

Further analysis and research in the above areas will provide an improved inventory of water consumption technologies associated with electricity generation.

The South African Coal Roadmap (SACRM, 2013) provides a multi-scenario analysis of the future possibilities and interventions in the local coal industry. The coal roadmap proposes four possible routes

ranging from business as usual (which include life extensions to the current fleet) to South Africa leading the world in reducing coal footprint (by employing ultra-super critical power stations and UCG, cyclic PF and FBC based technologies). South Africa predominantly will have to employ a route that is a combination of all scenarios in order to move towards a less coal intensive society while trying to negate the challenges encountered in supply and demand.

Proposed new coal technologies such as UCG and FBC technologies are expected to lower water usage and emissions. The risk associated with UCG technology, where very deep coal seams are burnt underground, is the contamination of underground water reserves (Atkins, 2004). Eskom's Majuba UCG pilot plant is a pioneering project in this technology which receives little public attention because of proprietary concerns (Eskom, 2008). FBC technologies are proposed to be viable for the Waterberg coal field which has large reserves of high ash and low-calorific value coal (SACRM, 2013). On the other hand emission reduction mechanisms such as retrofitting existing power plants with FGD are expected to increase the water footprint of power plants. Eskom has conducted a number of feasibility studies into the water consumption factors of some of the advanced technologies, as shown in Table 5 (DoE, 2011).

**Table 5: Indicative water consumption factor for new coal technologies**

Technology Type	Water consumption (l/kWh)
Pulverised fuel with FGD	0.25
Pulverised fuel with carbon capture storage	0.1
Fluidised bed coal	0.16

Source: DoE, 2011

Because of the lack of actual operational figures, these values can be used for conclusive forecasting only after thorough consultation and verification. To add to the uncertainty, the physical location of the coal power plant (which affects factors such as humidity, evaporation, altitude, etc.) is an important consideration when operational water consumption has to be estimated.

### 5.3 Recommendations for planning and implementation

The majority of South Africa's WMAs are under severe duress. This issue gets worse when taking into account the fact that most of the coal based power plants are within regions partially or severely constrained in terms of water. The following comments can be highlighted in order to enable decision-making.

- Eskom's RTS power plants namely Camden, Komati and Grootvlei which are water intensive power plants are located in the severely constrained WMAs namely, Olifants and Inkomati.
- The savings of roughly 35 ggalitres associated with the decommissioning of the RTS fleet and operation of the new build power plants Medupi and Kusile, could account for almost 15% of the forecasted deficit of 234 ggalitres by 2025.
- While Medupi is located in the moderately constrained WMA of Limpopo, Kusile is located in the severely constrained Olifants WMA. Therefore Kusile will have a larger water saving impact within the respective WMA.
- The role of coal in electricity generation will be a dominant factor up until locally available resources start to diminish. However, technologies that utilise water efficiently will have to play a more dominant role in order to preserve national water security.

Measures aimed towards increasing the efficiency of the RTS or gradual decommissioning could bring considerable changes to the forecasted WMA deficits. However decommissioning of the RTS fleet has to be done in concurrence with the commissioning of new build power plants,

South Africa as a country will have to adapt to water shortages in the near to medium future, as discussed in the introductory section. An inherent lack of abundant freshwater resources, coupled with increasing populations and changing rainfall patterns are bound to create a need for efficient and innovative changes in water usage. Though the agricultural sector is the predominant consumer of freshwater resources, the industrial and power generation sector also have considerable water usage footprints.

South Africa's electricity generation needs are bound to evolve in a manner that is dependent on numerous socio-economic factors such as economic growth, population growth, industrial strength, foreign direct investment, commodity prices, employment and a host of other factors. The most important element that cannot be disputed is the fact that at present South Africa's electricity availability is constrained which at current levels could adversely affect the economic growth of the nation. In order to stimulate production and remain vibrant as an economy, affordable and reliable supply of electricity is paramount.

## References

---

- ANDERSON S (2006) *Idaho Committee adopts moratorium on coal power*. Reuters News Service, Published on March 14.
- ATKINS (2004) *Review of environmental issues of underground coal gasification*. Report No: Coal R272 DTI/Pub URN 04/1880.
- BARKER B (2007) *Running dry at the power plant*. EPRI Journal, Summer p26-35.
- BARROSO LA, RUDNICK H, SENSFUSS F, and LINARES P (2010) *The Green Effect*. September/October 2010, IEEE Power and Energy Magazine.
- BOX GEP, JENKINS GM, and REINSAL GC (2013) *Time series analysis: Forecasting and control*. Fourth Edition, Wiley.
- CSIR (2010) *A CSIR perspective on water in South Africa-2010*. CSIR Report No: CSIR/NRE/PW/IR/2011/0012/A, ISBN: 978-0-7988-5595-2, CSIR, Pretoria.
- DE WET H (2010) *The Environmental Handbook: a guide to green business in South Africa*. 2nd ed. Trialogue: Cape Town.
- DE WIT M and STANKIEWICZ J (2006) Changes in surface water supply across Africa with predicted climate change. *Science* 311 (5769) 1917–1921.
- DoE (2011) Water – 2010 input parameter data (externality) Department of Energy, Pretoria, South Africa.
- DWA (2013) *National Water Resource Strategy, 2<sup>nd</sup> edition*. June 2013, Department of Water Affairs, Pretoria.
- EPRI (2007) *Program on Technology Innovation: Power Generation and Water Sustainability*. Report no: 1015444. Palo Alto, California, USA.
- EPRI (2008) *Water use for electric power generation*. Report no: 1014026. Palo Alto, California, USA.
- ESKOM (2008) *Underground coal gasification* available at <http://www.ee.co.za/wp-content/uploads/legacy/Eskom%20coal%20gasification.pdf>. Retrieved 28 November, 2014
- ESKOM (2010) *Water management– COP17 fact sheet*. Eskom, Sandton, South Africa.
- ESKOM (2014) *Personal communication with M. Kgole*. Eskom, Sandton, South Africa.
- ESKOM (2014a) *Supplementary and divisional report*. available at <http://integratedreport.eskom.co.za/supplementary/app-power.php#>. Retrieved 17 February, 2015.
- FEELEY TJ III, SKONE TJ, STIEGEL GJ, McNEMAR A, NEMETH M, SCHIMMOLLER B, MURPHY JT, and MANFREDO L (2008) Water: A critical resource in the Thermoelectric Power Industry. *Energy* 33 (1) 1-11.
- GAO (2009) *Energy-Water nexus*. Government Accountability Office, Washington DC, United States.
- GLEICK PH (1994) Water and Energy. *Annual Review of Energy and the Environment* 19, 267-99.
- IEA (2012) *Technology roadmaps: High-efficiency, low-emissions coal-fired power generation* OECD/IEA, Paris, France.
- IRP (2013) *Integrated Resource Plan for Electricity (IRP) 2010-2030: Update Report 2013*. Department of Energy, Pretoria, South Africa.
- JANSEN A and SCHULZ CE (2006) Water demand and the urban poor: A study of the factors influencing water consumption among households in Cape Town, South Africa. *South African Journal of Economics* 74 (3) 593-609.

- KENNY JF, BARBER NL, HUSTON SS, LINSEY KS, LOVELACE JK, and MAUPIN MA (2009) *Estimated Use of Water in the United States in 2005*. U.S. Geological Survey Circular 1344; Reston, VA, USA.
- KILETT MG, KUEHN NJ, and SCHOFF RL (2007) *Power plant water usage and loss study*. National Energy Technology Laboratory, Pittsburgh, PA, USA.
- KING C, DUNCAN I, and WEBBER M (2008) *Water demand projection for power generation in Texas*. (contract 0704830756) Texas Water Development Board, Austin TX, USA.
- MACKNICK J, NEWMARK R, HEATH G, and HALLETT KC (2011) *Review of operational water consumption and withdrawal factors for electricity generating technologies*. Technical Report, NREL/TP-6A20-50900, NREL, Colorado, USA.
- MARTIN AD (2012) *Water Footprint of Electric Power Generation: Modeling its Use and Analyzing Options for a Water-Scarce Future*. (MSc Thesis) Massachusetts Institute of Technology, Cambridge, USA.
- McKINSEY & COMPANY (2009) *Charting our water future: Economic frameworks to inform decision-making*. Water Resources Group, 2030; McKinsey & Company.
- MIELKE E, DIAZ AL, and NARAYANAMURTI V (2010) *Water Consumption of Energy Resource Extraction, Processing, and Conversion, A Review of the Literature for Estimates of Water Intensity of Energy-Resource Extraction, Processing to Fuels, and Conversion to Electricity* Energy Technology Innovation Policy Discussion Paper No. 2010-15, Harvard University.
- MITTAL A and GAFFIGAN M (2009) *Energy-Water Nexus: Improvements to Federal Water Use data would increase understanding of trends in power plant water use*. Report no: GAO-10-23, US Government Accountability Office; Washington DC, USA.
- NETL (2009) *Estimating freshwater needs to meet future thermoelectric generation requirements*. National Energy Technology Laboratory: 2009, DOE/NETL-400/ 2009/1139, USA.
- NETL (2013) *Estimating freshwater needs to meet future thermoelectric generation requirements*. National Energy Technology Laboratory: DOE/NETL-2013/1523, USA.
- NWRS (2004) *National Water Resource Strategy*. Department of Water Affairs: Pretoria, South Africa.
- ROUSSEAU PG, STRAUSS JP and GREYVENSTEIN GP (2001) Demand side management for water heating installations in South African commercial buildings. *International Journal of Energy Research* 25 (4) 291-317.
- RÜBBELKE D and VÖGELE S (2011) Impacts of climate change on European critical infrastructures: the case of the power sector. *Environmental Science and Policy* 14 (1) 53–63.
- RUTBERG JM (2012) *Modeling water use at thermoelectric power plants*. Master of Science in Mechanical Engineering; Massachusetts Institute of Technology, Cambridge, USA.
- SIERRA CLUB (2013) *Giant Fish Blenders: How Power Plants Kill Fish & Damage Our Waterways*. California, USA.
- SOUTH AFRICAN WATER RESEARCH COMMISSION (2009) *The state of water in South Africa – Are we heading for a crisis?* The Water Wheel. September/October: 31–33. South African Water Research Commission: Pretoria, South Africa.
- STATS SA (2010) *National Accounts: Water Management Areas in South Africa*. Discussion document number: D0504.8, Statistics South Africa, Pretoria, South Africa.
- THE ATLANTIC COUNCIL (2005) *A Marshall plan for energy and water supply in developing countries*. Atlantic Council, Washington DC, USA.

TURTON A (2008) *Three strategic water quality challenges that decision-makers need to know about and how the CSIR should respond*. Keynote address: A Clean South Africa. Presented at the CSIR Conference, Science Real and Relevant: 18 November 2008. Pretoria, South Africa.

U.S. DOE (2006) *Energy Demand on Water Resources – Report to Congress on the Interdependency of Energy and Water*. U.S. Department of Energy.

U.S. DOE (2008) *Electricity Reliability Impacts of a Mandatory Cooling Tower Rule for Existing Steam Generation Units*. U.S. Department of Energy.

VAN VLIET THM, VÖGELE S, and RÜBBELKE D (2013) Water constraints on European power supply under climate change: impacts on electricity price. *Environmental Research Letters* 8 (3). doi:10.1088/1748-9326/8/3/035010

WATER IN THE WEST (2013) *Water and Energy Nexus: A literature Review*. Stanford University, Stanford, USA.

WONG J (2009) The Green Leap Forward. Available online at: [greenleapforward.com/2009/02/17/chinas-new-water-efficiency-targets-and-implications-for-food-and-energy/](http://greenleapforward.com/2009/02/17/chinas-new-water-efficiency-targets-and-implications-for-food-and-energy/). Accessed on 25 October 2014.

WORLD BANK (2010) Available online at: [data.worldbank.org/country/south-africa](http://data.worldbank.org/country/south-africa). Accessed on 27 October 2014.

World Bank (2014) Available online at: <http://databank.worldbank.org/data/views/reports/tableview.aspx?isshared=true#>. Accessed on 27 April 2014.

YANG X and DRIEGIELEWSKI B (2007) Water use by thermoelectric Power Plants in the US. *Journal of American Water Resource Association* 43(1) 160-169.

ZEMICK K, VINCENT C, TIDWELL CV, ROBERTS LB, and CASTILLO RC (2013) Suitability assessment of non-potable water to meet the electricity generation demands in 2030. *Journal of Contemporary Water Research & Education* 151(1) 25-100.