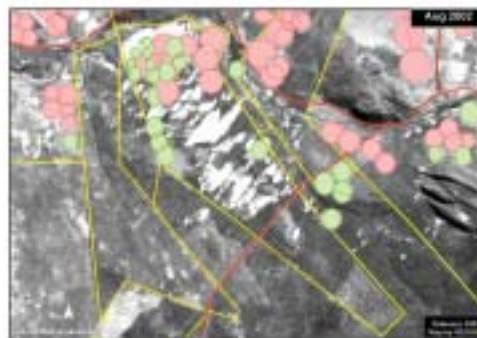




Soda ash plant, Sua Pan, Botswana - p 6



Eucalyptus trees - p 18



Space technology - p 26

<b>WATER NEWS</b>	<b>4</b>
<b>WATER TREATMENT</b>	<b>6</b>
From the Laboratory to the Marketplace	
<b>WATER QUALITY</b>	<b>10</b>
Human Cell Test Distinguishes Dirty Water from Dangerous Water	
<b>IRRIGATION</b>	<b>12</b>
Innovative New Irrigation Water Management Tool Enhances Production Efficiency with Benefits at Field, Farm and Irrigation Scheme Level	
<b>HYDROLOGY</b>	<b>18</b>
Predicting the Water Use and Growth of Eucalyptus Trees in Zululand	
<b>INDUSTRIAL WATER</b>	<b>22</b>
Waste Minimisation Makes Good Business Sense at Berg River Textiles	
<b>WATER USE</b>	<b>26</b>
Using Space Technology to Verify Water Use	
<b>VIEWPOINT</b>	<b>27</b>
Letters to the Editor	
<b>CONFERENCES AND SYMPOSIA</b>	<b>29</b>

**THE WATER WHEEL** is a two-monthly magazine on water and water research published by the South African Water Research Commission (WRC), a statutory organisation established in 1971 by Act of Parliament. Subscription is free. Material in this publication does not necessarily reflect the considered opinions of the members of the WRC, and may be copied with acknowledgement of source.

**Editorial offices:**

Water Research Commission, Private Bag X03, Gezina, 0031, Republic of South Africa. Tel (012) 330-9025. Fax (012) 330-3275. WRC Internet address: <http://www.wrc.org.za>

**Editor:** Jan du Plessis, E-mail: [jan@wrc.org.za](mailto:jan@wrc.org.za). **Editorial Secretary:** Rina Human, E-mail: [rina@wrc.org.za](mailto:rina@wrc.org.za)

**Layout:** Drinie van Rensburg, WRC. E-mail: [drinie@wrc.org.za](mailto:drinie@wrc.org.za) **Printing:** Beria Printers, Tel (012) 379 9096